

ACCESSIBILITY ASSESSMENT



**BUREAU
VERITAS**

prepared for

University of North Carolina at Chapel Hill
Giles Horney Building, CB 1090, 202C
103 Airport Drive
Chapel Hill, North Carolina 27599
Lindsay McManamon



ADA TITLE II ASSESSMENT

OF

Abernethy Hall
131 South Columbia Street
Chapel Hill, North Carolina 27514

PREPARED BY:

Bureau Veritas
6021 University Boulevard, Suite 200
Ellicott City, Maryland 21043
800.733.0660
www.bureauveritas.com

BV CONTACT:

Bryon Scott
Program Manager
800.733.0660 x7296625
Bryon.Scott@bureauveritas.com

BUREAU VERITAS PROJECT #:

165715.24R000-002.303

DATE OF REPORT:

July 22, 2024

ON-SITE DATE:

May 21, 2024

Bureau Veritas

6021 University Boulevard, Suite 200 | Ellicott City, MD 21043 | www.bureauveritas.com | p 800.733.0660

TABLE OF CONTENTS

1

Executive Summary

1

1.1

Summary of Findings

1

1.2

Accessibility Summary Table

1

1.3

Purpose

2

1.4

Scope of Work

2

1.5

Historic Amenities

4

1.6

Basis for Order of Magnitude Costs

4

1.7

Criteria for Priority Levels

4

2

Accessibility

5

2.1

Barrier Summary Table

5

3

Certification

12

4

Appendices

13

1 EXECUTIVE SUMMARY

1.1 SUMMARY OF FINDINGS

The Client contracted with Bureau Veritas to conduct a Title II Accessibility Assessment of Abernethy Hall. The purpose of this investigation and report is to provide the Client with accessibility recommendations concerning Abernethy Hall.

The site was visited on May 21, 2024. Weather conditions at the time of the on-site visit were clear, with temperatures in the 80s (°F) and negligible winds.

SIGNIFICANT ISSUES:

Significant barriers to accessibility are present at the amenities listed below. The issues prevent full accessibility at the amenity and are the most substantial non-compliant elements. Additional barriers may be present at the amenity. Further compliant detail is provided in Section 2 and Appendix B of the report.

Exterior Accessible Routes

- Sidewalk sections have cross slopes exceeding 2.08%.

Interior

- Service counter heights exceed 34".
- Accessible restrooms are not provided.
- Compliant vertical access is not provided to the second floor.
- Maneuvering clearance at doors is obstructed.

It is the responsibility of the owner to assess the requirement for barrier removal under Title I Employment, Title II State and Local Government Services, Title IV Telecommunications, Title V Miscellaneous of the ADA to create an accessible environment. Not all physical barriers identified in this report may need to be corrected. Some barriers may be the responsibility of others or can be corrected through programmatic change. It is incumbent upon the owner to initiate a transition planning process to outline which barrier will be corrected and when correction should take place. For further explanation, see Section 1.4, Scope of Work.

Each area of concern observed and identified by Bureau Veritas is detailed in this report, which includes Bureau Veritas's scope and methodology; ADA elements reviewed; individual observation details with recommendations and order of magnitude estimated costs; site plans with observation location data; and supporting materials.

1.2 ACCESSIBILITY SUMMARY TABLE

Based on the onsite review, Bureau Veritas found that barriers to accessibility exist at Abernethy Hall. The observed elements were analyzed using the 2010 ADA Standards for Accessible Design, state and local accessibility codes. The barriers are summarized in Section 2.1.

Bureau Veritas's assessment of the subject property identified the following areas of concern:

ABERNETHY HALL - TITLE II ACCESSIBILITY ASSESSMENT - ACCESSIBILITY SUMMARY

	Priority 1		Priority 2		Priority 3		Priority 4		Priority 5		Total	
Facility / Building	Est. Cost	Items	Est. Cost	Items	Est. Cost	Items	Est. Cost	Items	Est. Cost	Items	Est. Cost	Items
Abernethy Hall	\$294,407	44	\$3,875	2	\$40,434	23	\$4,698	2			\$343,414	71
Grand Total	\$294,407	44	\$3,875	2	\$40,434	23	\$4,698	2			\$343,414	71

Order of magnitude costs to address those elements are described individually in Appendix B.

1.3 PURPOSE

The purpose of this report is to assist the Client in evaluating the compliance of certain exterior and interior elements with the requirements of Title II of the Americans with Disabilities Act (ADA) and applicable state and local codes and regulations.

1.4 SCOPE OF WORK

ADA TITLE II ASSESSMENT

A Subject Matter Expert will visit the properties to assess the compliance of existing property improvements with the Title II provisions of the Americans with Disabilities Act (ADA) and applicable state requirements. Bureau Veritas then produces a report which identifies each facility's observed compliance issues and specific barriers, along with proposed remedies. Bureau Veritas endeavors to include all barriers within the defined scope of work area, however, some barriers may not be identified in the report. Bureau Veritas provides order of magnitude cost estimates directly associated with each barrier but does not provide engineered construction documents or construction cost estimates of barrier removal.

The field observer will review of the facility's common areas to observe and identify representative barriers to accessibility and formulate recommendations to remedy the physical barriers. As a part of the review, the field observer will meet with a property representative with specific knowledge of the facility to gain a clear understanding of overall features, public use patterns, and relevant historical data. The ADA covers both public areas and employee-only areas for Title II entities. For the purposes of this portfolio, only public, non-tenant owned features of the property will be subject to observation and will not include employee-only areas. Public, non-tenant areas will include but not be limited to, parking lots, sidewalks, access ramps, and exterior and interior common areas accessible to the public.

Title II entities are obligated to remove barriers under the requirements of the ADA as follows:

Facilities constructed prior to January 26, 1992— elements that do not comply with the 2010 ADA Standards are not required to be made compliant, unless alteration to those elements takes place. If elements are altered, then compliance with the 2010 Standards is required.

Facilities constructed between January 26, 1992 and March 15, 2012 — were required to comply with 1991 ADA Standards when constructed. If full compliance with the 1991 ADA Standards was not achieved by March 15, 2012, then the facilities must comply with the 2010 Standards. If elements in compliance with the 1991 Standards were altered after March 15, 2012, then compliance with the 2010 Standards is required.

Facilities constructed on March 15, 2012 to present- new construction, additions and alterations must be fully compliant with the 2010 ADA Standards for Accessible Design.

Alterations and Additions-

Additions and alterations undertaken at existing facilities are covered by the 2010 ADA Standards for Accessible Design. The extent of application is largely determined by a project's scope of work as the standards apply to those elements or spaces that are altered or added. Additional requirements apply to projects that affect or could affect the usability of, or access to, an area containing a primary function.

Alterations are defined in the standards as "a change in a building or facility that affects or could affect the usability of a building or facility or portion thereof." Many types of projects are covered as "alterations," including remodeling, renovation, rehabilitation, reconstruction, restoration, resurfacing of circulation paths or vehicular ways, and changes or rearrangement of structural parts, elements, or walls. Normal maintenance, reroofing, painting or wallpapering, or changes to mechanical and electrical systems are not considered alterations unless they affect a facility's usability. For example, a project limited to an HVAC system that includes the addition of thermostats would affect a facility's usability because it involves elements (operable parts) covered by the standards. The Department of Justice has determined that restriping of parking lots is considered an alteration of the parking facility.

The standards ensure that the opportunities for accessibility presented by an alteration are taken. How and to what extent the standards apply is determined by the scope of a project and the elements and spaces altered. Only those elements or spaces altered are required to comply, but alterations made to areas containing a primary function (a major activity for which a facility is intended) also require an accessible path of travel.

If alterations are limited only to elements in a room or space, then the standards apply only to the elements altered. Similarly, where spaces are altered, the standards apply to those spaces that are altered. If a room or space is completely altered (or built new as part of an alteration), the entire room or space is fully subject to the standards. Compliance is required to the extent that it is technically feasible.

Projects that increase, expand, or extend a facility's gross floor area or height of a facility are considered additions and must comply with the requirements of the standards applicable to new construction. Existing elements and spaces affected by an addition are treated as alterations and qualify for certain allowances or exceptions that are not permitted in new construction.

Compliance in an alteration is not required where it is “technically infeasible.” The term is defined as “something that has little likelihood of being accomplished because existing structural conditions would require removing or altering a load-bearing member that is an essential part of the structural frame; or because other existing physical or site constraints prohibit modification or addition of elements, spaces, or features that are in full and strict compliance with the minimum requirements.” Where technical infeasibility is encountered, compliance is still required to the maximum extent technically feasible.

FIELD OBSERVATION PROCESS

The field observer will first review documents and information provided by the owner or owner’s representative that could supplement the consultant’s knowledge of the subject property’s physical improvements, extent and type of use, and/or assist in identifying barriers to accessibility.

During the site visit, the field observer will utilize a Survey Form that meets or exceeds the current ADAAG format, and will utilize a digital level, measuring tape, pressure gauge and digital camera. The field observer will identify and prioritize observed existing improvements which are not in accordance with the applicable ADA requirements in the order of preference as set out by the DOJ and refined by Bureau Veritas per client preferences. Typical priorities are as follows:

- Physical access to the property
- Access to areas of commerce or public accommodation

The Bureau Veritas team will assess exterior common areas and interior common areas that are defined as areas of public accommodation. Bureau Veritas will identify existing conditions that are not in accordance with the ADA Accessibility Guidelines, including the elements specified below (if applicable, where landlord is responsible for observed elements):

- Passenger loading zones
- Parking: van and standard car accessible stalls, signage, and markings
- Exterior accessible routes, including travel on vehicular ways, sidewalks and paths
- Ground and floor surfaces
- Curb ramps and other ramps: size, distance, slope, rails and surface finishes
- Interior accessible routes
- Exterior and interior stairs which are part of the means of egress
- Elevators and platform lifts (wheelchair lifts)
- Entrances and exits to common areas
- Handrails and grab bars
- Space allowance and reach ranges
- Restrooms
- Alarms (visual and audible) and warnings
- Signage- Braille, and visual characters
- Public telephones
- Switches and outlets

REPORT CONTENT

Bureau Veritas will deliver a consolidated AssetCalc™ database, which will be capable of exporting electronic (PDF) reports for each property surveyed which will include:

- Summary of Findings for all primary features (for example, parking stalls, curb ramps, paths of travel, restrooms);
- Individually recorded barriers
- Digital photos of observed barriers
- Geocode references for the location of observed exterior barriers
- Applicable ADA and state regulatory references
- Recommendations for viable corrective measures necessary to comply with regulations
- Order of magnitude cost estimates for each barrier

The estimates for the non-compliant items noted within this report are summarized in Section 2.1, and individual barrier details are provided in Appendix B.

1.5 HISTORIC AMENITIES

This property does not contain any amenities which are listed on the National Register of Historic Places or a state or local registry of historic elements.

1.6 BASIS FOR ORDER OF MAGNITUDE COSTS

Order of magnitude estimates are based on invoice or bid documents provided either by the Owner/facility and construction costs developed by construction resources such as *R.S. Means* and *Marshall & Swift*, Bureau Veritas's experience with past costs for similar properties, city cost indexes, and assumptions regarding future economic conditions. Typically, barrier removal allowances are based upon the removal of the specific element being evaluated (for example, parking stall, curb ramp, restroom). Architectural plans for renovation of areas requiring barrier removal or grading plans based on field surveys using land surveyor instrumentation could result in significantly different material quantities and subsequent higher project costs. Bureau Veritas has no control over the final scope of work, pricing methods, and costs associated with a contractor constructing the project. The opinion of estimated costs within this report cannot guarantee that the costs will accurately reflect the actual bids for construction.

1.7 CRITERIA FOR PRIORITY LEVELS

The scope of this assessment is limited to exterior site features and amenities, specifically accessible parking and exterior accessible pedestrian paths of travel to and from the amenities and features provided at each site. This includes parking, public transportation, retail, restaurant, office and industrial space, where applicable. As such, Bureau Veritas prioritized each of the captured barriers based on modified, published Department of Justice (DOJ) criteria focusing on the primary scope of work. Interior spaces such as common corridors, restrooms, kitchens and other interior elements along the common path of travel, such as water fountains, that are the responsibility of the property owner, are included.

The ADA also regulates employee work areas. Common corridors used by employees, employee restrooms, employee kitchens and employee break rooms are not considered "employee work areas." Those areas, even if used by employees only, shall comply with the ADA regulations which govern corridors, restrooms, kitchens and break rooms. The scope of this project does not include employee-only areas.

Per DOJ Guidelines, *people with disabilities should be able to arrive on the site, approach the building or facility and its amenities, and enter as freely as everyone else.*

Priority 1: Accessible Van Parking – Access to a facility begins with accessible parking. Van accessible parking is deemed an important barrier for parking. Those with the most severe disabilities tend to require a van accessible space to accommodate their vehicle and mobility device. In addition, a minimum number of van accessible spaces is required. Barriers associated with the compliance of a van accessible space include signage, restriping, constructing or reconfiguring the pavement to accommodate the required number of spaces.

Accessible Car Parking – Car accessible parking includes all barriers associated with the compliance of a car accessible space including signage, restriping, constructing or reconfiguring the pavement to accommodate the required number of accessible spaces.

Accessible Approach and Entrances – An entity providing accommodation to the public is required to take measures to provide access to a place of public accommodation from public sidewalks, parking, or public transportation. The DOJ and state building codes dictate the minimum width, cross and running slope, signage, and handrail requirements associated with pedestrian accessible routes of travel. These measures include, for example, installing an entrance ramp, correcting tripping hazards or lessening the slope of a curb ramp. At least one route of travel to each amenity or feature should be safe and accessible for everyone, including people with disabilities.

Priority 2: Elements along the Accessible Route – Barriers which occur along the path of travel shall be removed, where such a barrier removal is easily accomplishable. Examples include moving items within reach range, widening doors, installing accessible door hardware, and removing high-pile carpeting.

Priority 3: Restroom Facilities – Barrier removal may include widening of toilet stalls, installation of grab bars, replacement of sinks, and drinking fountains.

Priority 4: Access to All Other Features and Amenities – Measures are required to provide access to other areas. This priority is for items not required for basic access in the other three priorities.

Priority 5: Employee-Only Areas – Where employee-only areas are included in the assessment, employee only areas are designated as the lowest priority, as a method of placing public spaces as a higher priority for barrier removals.

2 ACCESSIBILITY

Generally, Title II of the Americans with Disabilities Act (ADA) prohibits discrimination by entities to access and use of the programs, services, and activities on the basis of disability. Regardless of their age, these areas and facilities must be maintained and operated to comply with the Americans with Disabilities Act Accessibility Guidelines (ADAAG), and applicable state and local accessibility regulations to the maximum extent possible for providing programmatic access.

The scope of the Accessibility Assessment, as defined in the scope of work, is limited to exterior and interior areas covered by the ADA, and applicable state and local accessibility codes.

2.1 BARRIER SUMMARY TABLE

The following table summarizes the barriers that were identified. The costs provided are order of magnitude estimates. Costs will vary depending upon the location and volume of work performed. Individual observation details may be found in Appendix B.

Barrier Summary Report

Id	ADA Master Cost Id	Facility	Building	Assembly	Type	Barrier Priority	Detail	GPS Marker	Lat/Long	Location Description	ADA	Ref. Number	Quantity	Cost	Unit	Region	Manager	Date Observed	Date Completed	Total
455995	2344	Abernethy Hall	EXTERIOR	Exterior Access Route	Stairs	1	Handrails are not compliant or are not provided.	1	+35.911415, -79.054570	Columbia Street	ADA	505	12	\$203.75	LF			05/20/2024		\$2,445
455996	2344	Abernethy Hall	EXTERIOR	Exterior Access Route	Stairs	1	Handrails are not compliant or are not provided.	2	+35.911428, -79.054508	Columbia Street Main Entrance	ADA	505	14	\$203.75	LF			05/20/2024		\$2,853
455997	2771	Abernethy Hall	EXTERIOR	Exterior Access Route	Stairs	1	NORTH CAROLINA: The stair tread, at the leading 2" at the stair nosing, does not have a visual contrast of dark-on-light or light-on-dark distinguished from the remainder of the tread.	3	+35.911408, -79.054543	Columbia Street Main Entrance	IBC	2009 ANSI A117.1-504.5	6	\$125	Riser			05/20/2024		\$750
455998	2771	Abernethy Hall	EXTERIOR	Exterior Access Route	Stairs	1	NORTH CAROLINA: The stair tread, at the leading 2" at the stair nosing, does not have a visual contrast of dark-on-light or light-on-dark distinguished from the remainder of the tread.	4	+35.911383, -79.054646	Columbia Street	IBC	2009 ANSI A117.1-504.5	5	\$125	Riser			05/20/2024		\$625
455999	1794	Abernethy Hall	EXTERIOR	Exterior Access Route	Exterior Accessible Route	1	The accessible route has cross slopes greater than 1:50 (2%).	5	+35.911384, -79.054562	Exterior Brick Walk	ADA	403.3	2100	\$42.64	SF			05/20/2024		\$89,544
456000	1030	Abernethy Hall	EXTERIOR	Exterior Access Route	Protruding Object	1	Sidewalk does not meet the 36" minimum clear width requirement (60" minimum where passing areas are present).	6	+35.911493, -79.054533	Exterior Brick Walk	ADA	403.5.1; 403.5.3	2	\$125	EA			05/20/2024		\$250
456032	2344	Abernethy Hall	EXTERIOR	Exterior Access Route	Stairs	1	Handrails are not compliant or are not provided.	38	35.91174550985924, -79.05418856564141	Side Exit	ADA	505	8	\$203.75	LF			05/20/2024		\$1,630
456033	2771	Abernethy Hall	EXTERIOR	Exterior Access Route	Stairs	1	NORTH CAROLINA: The stair tread, at the leading 2" at the stair nosing, does not have a visual contrast of dark-on-light or light-on-dark distinguished from the remainder of the tread.	39	35.91170497373936, -79.05433494171619	Side Exit	IBC	2009 ANSI A117.1-504.5	4	\$125	Riser			05/20/2024		\$500
456009	1132	Abernethy Hall	INTERIOR	Interior Access Route	Door	1	The hardware at the accessible door (including sliding doors - both sides) requires tight grasping, pinching or twisting of the wrist to operate OR is mounted below 34" or above 48".	15		Interior Doors	ADA	309, 404.2.7	41	\$366.25	EA			05/20/2024		\$15,016
Total Barriers: 71, Total Cost: \$343,414																				

Id	ADA Master		Facility	Building	Assembly	Type	Barrier Priority	Detail	GPS Marker	Lat/Long	Location		ADA	Ref. Number	Quantity	Cost	Unit	Region	Manager	Date Observed	Date Completed	Total
	Cost Id										Description											
456034	2772		Abernethy Hall	INTERIOR	Interior Access Route	Stairs	1	NORTH CAROLINA: The stair tread, at the leading 2" at the stair nosing, does not have a visual contrast of dark-on-light or light-on-dark distinguished from the remainder of the tread.	40			Stair 100B	IBC	2009 ANSI A117.1-504.5	21	\$125	Riser			05/20/2024		\$2,625
456035	1127		Abernethy Hall	INTERIOR	Interior Access Route	Door	1	The door has less than 32" clear width.	41			Stair 100B	ADA	307.4, 404.2.3	1	\$3250	EA			05/20/2024		\$3,250
456036	2393		Abernethy Hall	INTERIOR	Interior Access Route	Stairs	1	Handrails are not compliant.	42			Stair 100B	ADA	505	25	\$203.75	LF			05/20/2024		\$5,094
456037	1128		Abernethy Hall	INTERIOR	Interior Access Route	Door	1	The pull side of the accessible door does not have the required maneuvering clearances.	43			Room 118	ADA	404.2.4; Table 404.2.4.1	1	\$1562.5	EA			05/20/2024		\$1,563
456040	1128		Abernethy Hall	INTERIOR	Interior Access Route	Door	1	The pull side of the accessible door does not have the required maneuvering clearances.	46			Room 120	ADA	404.2.4; Table 404.2.4.1	1	\$1562.5	EA			05/20/2024		\$1,563
456041	1127		Abernethy Hall	INTERIOR	Interior Access Route	Door	1	The door has less than 32" clear width.	47			Room 120	ADA	307.4, 404.2.3	1	\$3250	EA			05/20/2024		\$3,250
456042	1128		Abernethy Hall	INTERIOR	Interior Access Route	Door	1	The pull side of the accessible door does not have the required maneuvering clearances.	48			Hallway Door to 120A	ADA	404.2.4; Table 404.2.4.1	1	\$1562.5	EA			05/20/2024		\$1,563
456043	1128		Abernethy Hall	INTERIOR	Interior Access Route	Door	1	The pull side of the accessible door does not have the required maneuvering clearances.	49			Room 122	ADA	404.2.4; Table 404.2.4.1	1	\$1562.5	EA			05/20/2024		\$1,563
456044	1925		Abernethy Hall	INTERIOR	Interior Access Route	Elevator	1	The building does not have elevator access between stories.	50			Abernathy Hall Access	ADA	206.2.3	1	\$100000	EA			05/20/2024		\$100,000
456045	2772		Abernethy Hall	INTERIOR	Interior Access Route	Stairs	1	NORTH CAROLINA: The stair tread, at the leading 2" at the stair nosing, does not have a visual contrast of dark-on-light or light-on-dark distinguished from the remainder of the tread.	51			Main Staircase	IBC	2009 ANSI A117.1-504.5	27	\$125	Riser			05/20/2024		\$3,375
456046	1123		Abernethy Hall	INTERIOR	Interior Access Route	Stairs	1	Handrails are not compliant.	52			Main Staircase	ADA	505	60	\$203.75	LF			05/20/2024		\$12,225
456060	1127		Abernethy Hall	INTERIOR	Interior Access Route	Door	1	The door has less than 32" clear width.	66			Room 202A	ADA	307.4, 404.2.3	1	\$3250	EA			05/20/2024		\$3,250
456062	1127		Abernethy Hall	INTERIOR	Interior Access Route	Door	1	The door has less than 32" clear width.	68			Room 203A	ADA	307.4, 404.2.3	1	\$3250	EA			05/20/2024		\$3,250
Total Barriers: 71, Total Cost: \$343,414																						

Id	ADA Master		Facility	Building	Assembly	Type	Barrier Priority	Detail	GPS Marker	Lat/Long	Location		Ref. Number	Quantity	Cost	Unit	Region	Manager	Date Observed	Date Completed	Total	
	Cost Id	Description									ADA											
456063	1128		Abernethy Hall	INTERIOR	Interior Access Route	Door	1	The pull side of the accessible door does not have the required maneuvering clearances.	69			Room 204A	ADA	404.2.4; Table 404.2.4.1	1	\$125	EA			05/20/2024		\$125
456064	1128		Abernethy Hall	INTERIOR	Interior Access Route	Door	1	The pull side of the accessible door does not have the required maneuvering clearances.	70			Room 202B	ADA	404.2.4; Table 404.2.4.1	1	\$1562.5	EA			05/20/2024		\$1,563
456066	1134		Abernethy Hall	INTERIOR	Interior Access Route	Door	1	The opening force required to open the accessible, hinged, non-fire door is more than 5 pounds.	72			Top Staircase Doors	ADA	404.2.9	3	\$458	EA			05/20/2024		\$1,374
456067	1127		Abernethy Hall	INTERIOR	Interior Access Route	Door	1	The door has less than 32" clear width.	73			Stair 200B	ADA	307.4, 404.2.3	1	\$3250	EA			05/20/2024		\$3,250
456068	1127		Abernethy Hall	INTERIOR	Interior Access Route	Door	1	The door has less than 32" clear width.	74			Room 219A	ADA	307.4, 404.2.3	1	\$3250	EA			05/20/2024		\$3,250
456069	1127		Abernethy Hall	INTERIOR	Interior Access Route	Door	1	The door has less than 32" clear width.	75			Room 219A inner doors	ADA	307.4, 404.2.3	2	\$3250	EA			05/20/2024		\$6,500
456070	1128		Abernethy Hall	INTERIOR	Interior Access Route	Door	1	The pull side of the accessible door does not have the required maneuvering clearances.	76			Room 219A	ADA	404.2.4; Table 404.2.4.1	1	\$125	EA			05/20/2024		\$125
456071	1127		Abernethy Hall	INTERIOR	Interior Access Route	Door	1	The door has less than 32" clear width.	77			Room 219B	ADA	307.4, 404.2.3	1	\$3250	EA			05/20/2024		\$3,250
456074	1128		Abernethy Hall	INTERIOR	Interior Access Route	Door	1	The pull side of the accessible door does not have the required maneuvering clearances.	80			Room 218	ADA	404.2.4; Table 404.2.4.1	1	\$1562.5	EA			05/20/2024		\$1,563
456075	1134		Abernethy Hall	INTERIOR	Interior Access Route	Door	1	The opening force required to open the accessible, hinged, non-fire door is more than 5 pounds.	81			Room 218A	ADA	404.2.9	1	\$458	EA			05/20/2024		\$458
456076	1128		Abernethy Hall	INTERIOR	Interior Access Route	Door	1	The pull side of the accessible door does not have the required maneuvering clearances.	82			Room 218B	ADA	404.2.4; Table 404.2.4.1	1	\$1562.5	EA			05/20/2024		\$1,563
456077	1127		Abernethy Hall	INTERIOR	Interior Access Route	Door	1	The door has less than 32" clear width.	83			Room 218B	ADA	307.4, 404.2.3	1	\$3250	EA			05/20/2024		\$3,250
456012	1128		Abernethy Hall	INTERIOR	Interior Access Route	Door	1	The pull side of the accessible door does not have the required maneuvering clearances.	18			Room 105	ADA	404.2.4; Table 404.2.4.1	1	\$1562.5	EA			05/20/2024		\$1,563
456013	1127		Abernethy Hall	INTERIOR	Interior Access Route	Door	1	The door has less than 32" clear width.	19			Room 105 interior door	ADA	307.4, 404.2.3	1	\$3250	EA			05/20/2024		\$3,250
Total Barriers: 71, Total Cost: \$343,414																						

Id	ADA Master		Facility	Building	Assembly	Type	Barrier Priority	Detail	GPS Marker	Lat/Long	Location		ADA	Ref. Number	Quantity	Cost	Unit	Region	Manager	Date Observed	Date Completed	Total
	Cost Id										Description											
456014	1128		Abernethy Hall	INTERIOR	Interior Access Route	Door	1	The pull side of the accessible door does not have the required maneuvering clearances.	20			Room 103	ADA	404.2.4; Table 404.2.4.1	1	\$125	EA			05/20/2024		\$125
456015	1134		Abernethy Hall	INTERIOR	Interior Access Route	Door	1	The opening force required to open the accessible, hinged, non-fire door is more than 5 pounds.	21			Room 102	ADA	404.2.9	2	\$458	EA			05/20/2024		\$916
456016	1133		Abernethy Hall	INTERIOR	Interior Access Route	Door	1	The accessible door with door closer has a sweep period of less than 5 seconds from 90 degrees to a position 12 degrees from latch.	22			Room 102	ADA	404.2.8	2	\$457.5	EA			05/20/2024		\$915
456027	1128		Abernethy Hall	INTERIOR	Interior Access Route	Door	1	The pull side of the accessible door does not have the required maneuvering clearances.	33			Room 115	ADA	404.2.4; Table 404.2.4.1	1	\$125	EA			05/20/2024		\$125
456028	1128		Abernethy Hall	INTERIOR	Interior Access Route	Door	1	The pull side of the accessible door does not have the required maneuvering clearances.	34			Room 116 Mailroom	ADA	404.2.4; Table 404.2.4.1	1	\$1562.5	EA			05/20/2024		\$1,563
456029	1128		Abernethy Hall	INTERIOR	Interior Access Route	Door	1	The pull side of the accessible door does not have the required maneuvering clearances.	35			Room 119A	ADA	404.2.4; Table 404.2.4.1	1	\$125	EA			05/20/2024		\$125
456030	1128		Abernethy Hall	INTERIOR	Interior Access Route	Door	1	The pull side of the accessible door does not have the required maneuvering clearances.	36			Room 121	ADA	404.2.4; Table 404.2.4.1	1	\$125	EA			05/20/2024		\$125
456031	1127		Abernethy Hall	INTERIOR	Interior Access Route	Door	1	The door has less than 32" clear width.	37			Side exit interior doorway	ADA	307.4, 404.2.3	1	\$3250	EA			05/20/2024		\$3,250
456002	2338		Abernethy Hall	EXTERIOR	Exterior Access Route	Reach Range	2	Items requiring an obstructed forward reach motion are higher than 48" maximum height where the depth of the obstruction is 20" maximum, or greater than 44" maximum height where the depth of the obstruction is 20" to 25" maximum, or lower than minimum 15" height above finish floor.	8	+35.911454, -79.054541		Emergency Call #94	ADA	308, 309	1	\$625	EA			05/20/2024		\$625
Total Barriers: 71, Total Cost: \$343,414																						

Id	ADA Master		Facility	Building	Assembly	Type	Barrier Priority	Detail	GPS Marker	Lat/Long	Location		Quantity	Cost	Unit	Region	Manager	Date Observed	Date Completed	Total
	Cost Id										Description	ADA								
456018	1274		Abernethy Hall	INTERIOR	Restroom	Restroom/Bathroom - Water Closet	3	The grab bars at the water closet are not compliant.	24		First Floor Women's Restroom	ADA	604.5.2	1	\$887.5	EA		05/20/2024		\$888
456019	1187		Abernethy Hall	INTERIOR	Restroom	Restroom/Bathroom - Door	3	The door has less than 32" clear width.	25		First Floor Women's Restroom	ADA	404.2.3	1	\$1405	EA		05/20/2024		\$1,405
456020	2136		Abernethy Hall	INTERIOR	Restroom	Restroom/Bathroom - Water Closet	3	The centerline of the toilet in the wheelchair stall is not 16" minimum to 18" maximum from the sidewall.	26		First Floor Women's Restroom	ADA	604.2	1	\$787.5	EA		05/20/2024		\$788
456021	1269		Abernethy Hall	INTERIOR	Restroom	Restroom/Bathroom - Floor Space	3	The required turning space within the restroom is not provided.	27		First Floor Women's Restroom	ADA	304, 603.2.1; 603.2.2	1	\$11562.5	EA		05/20/2024		\$11,563
456022	1223		Abernethy Hall	INTERIOR	Restroom	Restroom/Bathroom - Lavatory	3	Pipes are not insulated.	28		First floor Women's	ADA	213.3.4, 606.5	2	\$81.25	EA		05/20/2024		\$163
456023	1224		Abernethy Hall	INTERIOR	Restroom	Restroom/Bathroom - Lavatory	3	The lavatory faucet hardware is not compliant.	29		First Floor Women's Restroom	ADA	606.4; 309	2	\$693.75	EA		05/20/2024		\$1,388
456024	1282		Abernethy Hall	INTERIOR	Restroom	Restroom/Bathroom - Mirror	3	The mirror is mounted higher than 40" above finish floor to the bottom of the reflective surface, where it is installed above a lavatory or counter.	30		First Floor Women's Restroom	ADA	213.3.5; 603.3	1	\$250	EA		05/20/2024		\$250
456025	1284		Abernethy Hall	INTERIOR	Restroom	Controls And Dispensers	3	The height of controls are not compliant.	31		First Floor Women's Restroom	ADA	606.1; 309.3	2	\$250	EA		05/20/2024		\$500
456026	1224		Abernethy Hall	INTERIOR	Restroom	Restroom/Bathroom - Lavatory	3	The lavatory faucet hardware is not compliant.	32		Restroom 108	ADA	606.4; 309	1	\$693.75	EA		05/20/2024		\$694
456059	1157		Abernethy Hall	INTERIOR	Interior Access Route	Drinking Fountain/Water Cooler	4	The minimum number of drinking fountains is not provided. If the minimum number is provided, two levels or a hi-lo are not provided. If more than 2 are provided, less than 50% are high or less than 50% are low.	65		Drinking Fountain DF-2 at Second Floor Men's Restroom	ADA	211.1; 211.2; 602; 309	1	\$4698	EA		05/20/2024		\$4,698
456061	3401		Abernethy Hall	INTERIOR	Amenity Not Evaluated	Amenity Not Evaluated	4	The amenity cannot be accessed and, therefore, cannot be evaluated.	67		Room 203A	ADA	None	1	\$0	EA		05/20/2024		\$0
Total Barriers: 71, Total Cost: \$343,414																				

3 CERTIFICATION

Bureau Veritas has completed a Title II Accessibility Assessment of the subject property, Abernethy Hall, 131 South Columbia Street, Chapel Hill, Orange County, North Carolina 27514. The site was visited on May 21, 2024.

The assessment was performed at the Client's request using methods and procedures consistent with good commercial and customary practice for assessing compliance with the Title II provisions of the Americans with Disabilities Act (ADA) and applicable state and local requirements.

This report has been prepared for and is exclusively for the use and benefit of the Client identified on the cover page of this report. The purpose for which this report shall be used shall be limited to the use as stated in the contract between the client and Bureau Veritas.

This report, or any of the information contained therein, is not for the use or benefit of, nor may it be relied upon by any other person or entity, for any purpose without the advance written consent of Bureau Veritas. Any reuse or distribution without such consent shall be at the client's or recipient's sole risk, without liability to Bureau Veritas.

The opinions Bureau Veritas expresses in this report were formed utilizing the degree of skill and care ordinarily exercised by an architect or engineer in the same community under similar circumstances. Bureau Veritas assumes no responsibility or liability for the accuracy of information contained in this report which has been obtained from the Client or the Client's representatives, from other interested parties, or from the public domain. The conclusions presented represent Bureau Veritas's professional judgment based on information obtained during the course of this assignment. The conclusions presented are based on the data provided, observations made, and conditions that existed specifically on the date of the assessment.

Bureau Veritas certifies that Bureau Veritas has no undisclosed interest in the subject property, Bureau Veritas's relationship with the Client is at arm's-length, and that Bureau Veritas's employment and compensation are not contingent upon the findings or order of magnitude estimated costs to remove barriers.

If you have any questions regarding this report, please contact Program Manager Name at Bryon.Scott@bureauveritas.com or at (800) 766-0660, x7296625.

Prepared by: Brian Rogers
Field Observer

Reviewed by: *Philip Smith*

Philip Smith
philip.smith@bureauveritas.com

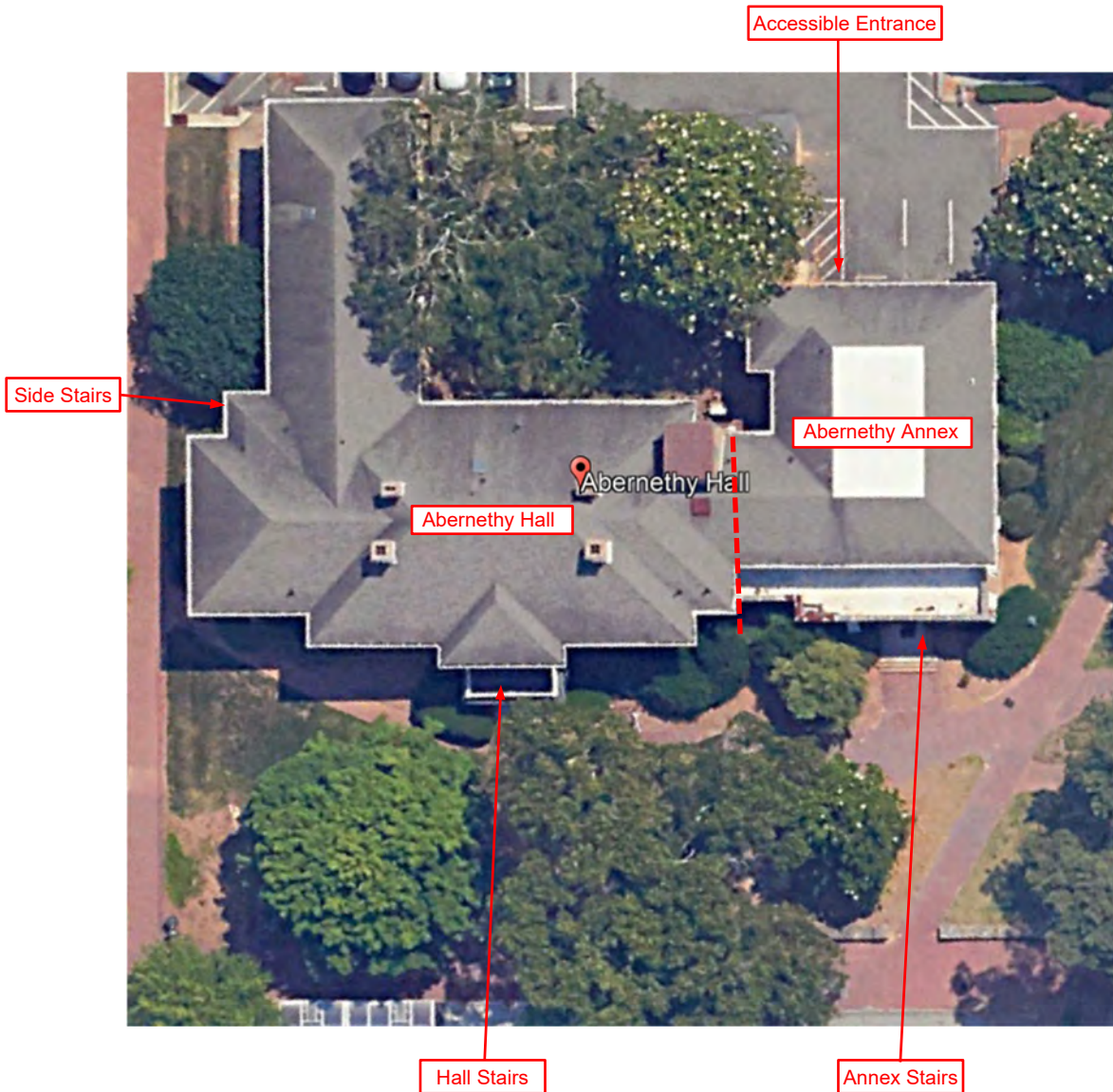
4 APPENDICES

APPENDIX A: SITE AND FLOOR PLANS

APPENDIX B: RECORD OF INDIVIDUAL BARRIERS

APPENDIX A: SITE AND FLOOR PLANS

Site Plan



Source:
Google Earth
Legend:
N/A

Project Number:
165715.24R000-002.303

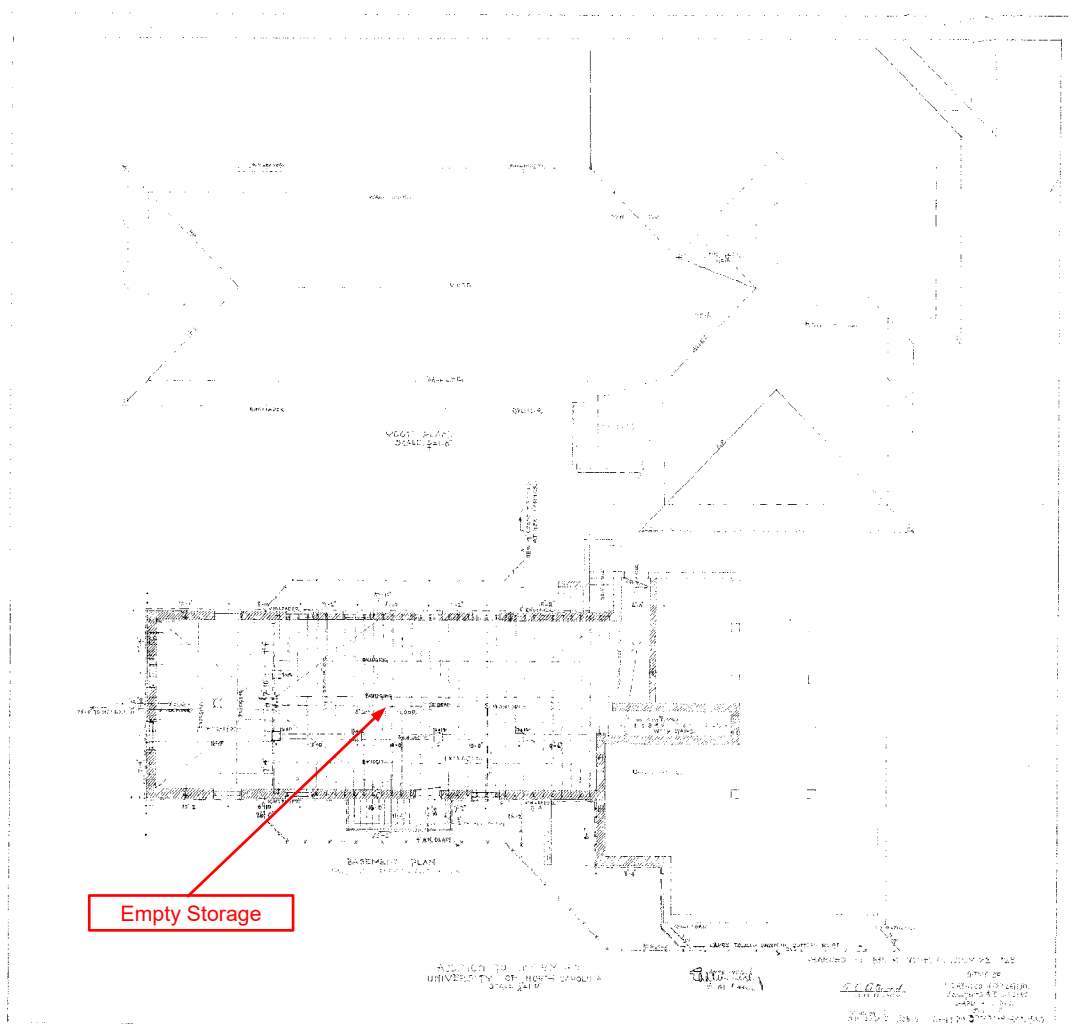
Project Name:
Abernethy Hall

On-Site Date:
May 22, 2024



The north arrow indicator is an approximation of 0° North.

Floor Plan - Basement



Source:
UNC - Facilities



Legend:
N/A

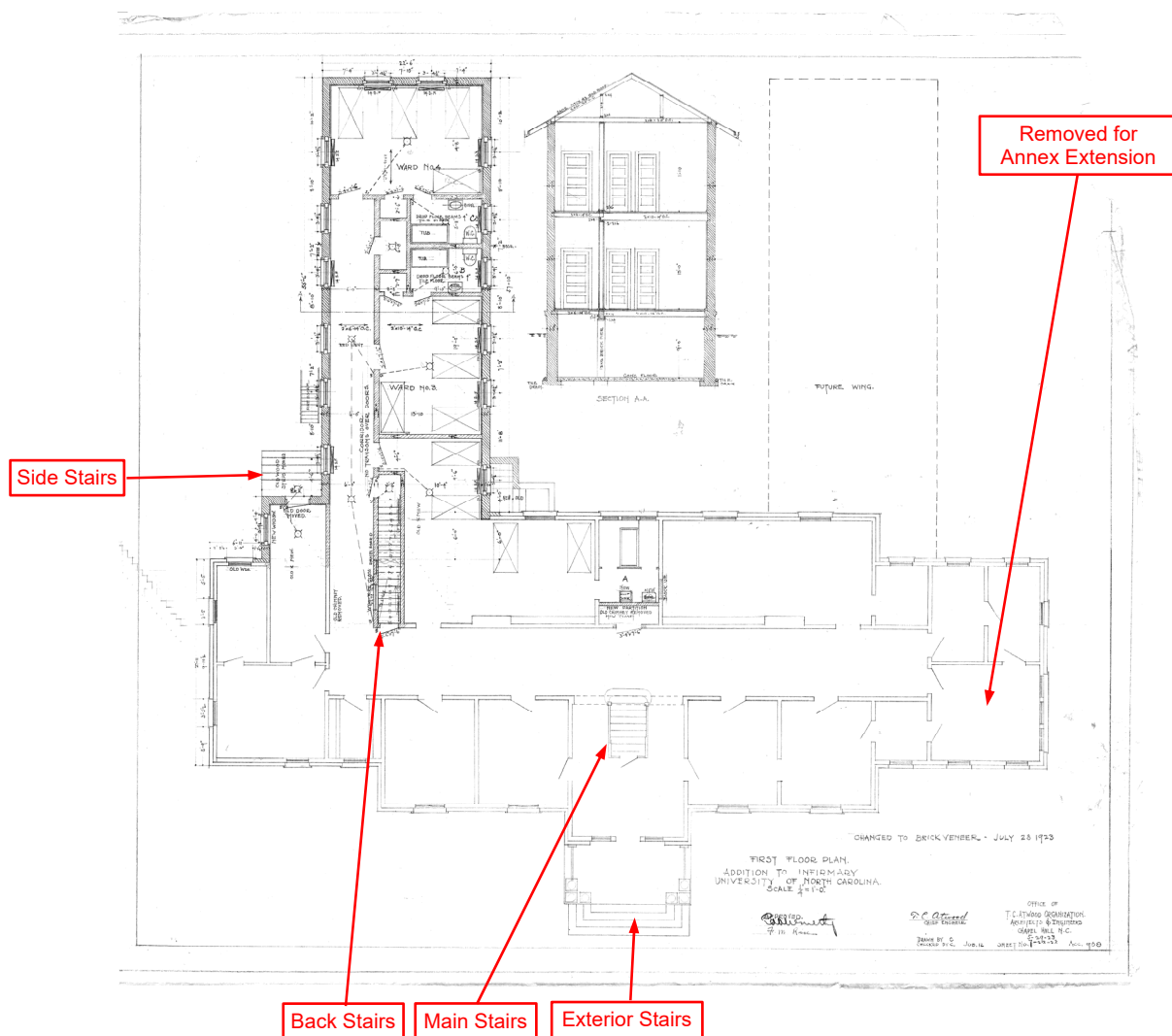
The north arrow indicator is an approximation of 0° North.

Project Number:
165715.24R000-002.303

Project Name:
Abernethy Hall

On-Site Date:
May 21, 2024

Floor Plan – First Floor



Rooms depicted on these plans
no longer represent physical
layout of rooms



Source:
UNC - Facilities

Legend:
N/A



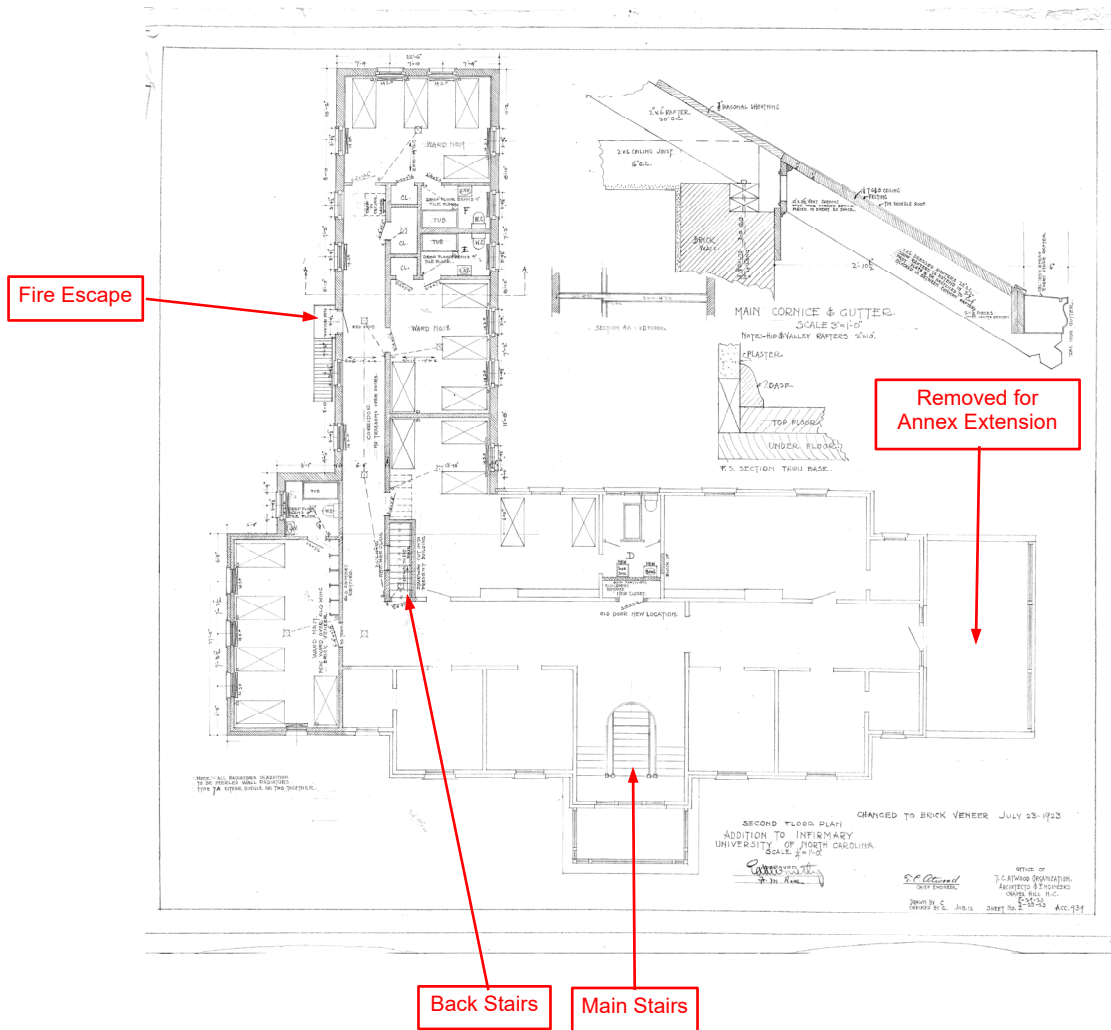
The north arrow indicator is an
approximation of 0° North.

Project Number:
165715.24R000-002.303

Project Name:
Abernethy Hall

On-Site Date:
May 21, 2024

Floor Plan – Second Floor



Rooms depicted on these plans
no longer represent physical
layout of rooms



Source:
UNC - Facilities

Legend:
N/A

The north arrow indicator is an approximation of 0° North.

Project Number:
165715.24R000-002.303

Project Name:
Abernathy Hall

On-Site Date:
May 21, 2024

APPENDIX B: RECORD OF INDIVIDUAL BARRIERS

Abernethy Hall INTERIOR

Assembly	Interior Access Route
Type	Elevator
ADA Standard	206.2.3
Barrier Detail	The building does not have elevator access between stories.
Location Description	Abernathy Hall Access
Observed	May 20, 2024 by Brian.rogers@bureauveritas.com

Site Conditions

The building does not have compliant vertical access between the first and second floors.

Resolution

Provide an elevator for access to upper floors in multiple-storied buildings. Due to the length of the requirements for an elevator in the 2010 ADA Standards for Accessible Design, please refer to the separate elevator appendix of the report, which details Section 407 of the 2010 Standards for Accessible Design. The quantity and order of magnitude cost estimate provided for this barrier are limited to the extent of the area identified as non-compliant. Additional costs that may be associated with removing and repairing the barrier are not included.

Quantity	Unit Cost	Total Cost
1 EA	100,000.00	\$ 100,000
Priority	1	

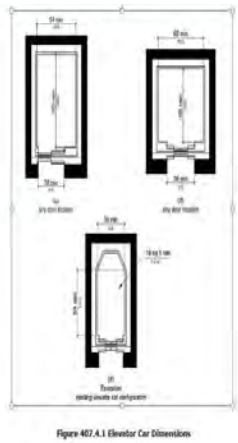
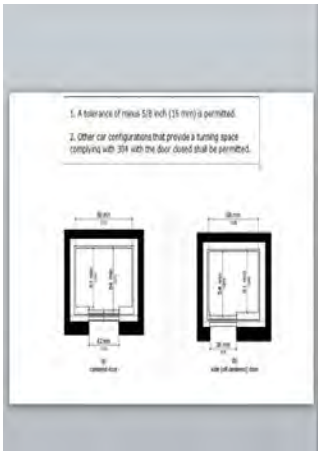
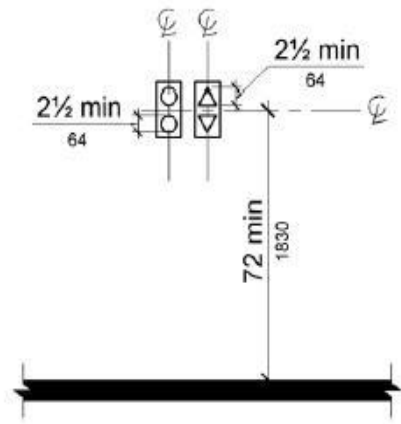
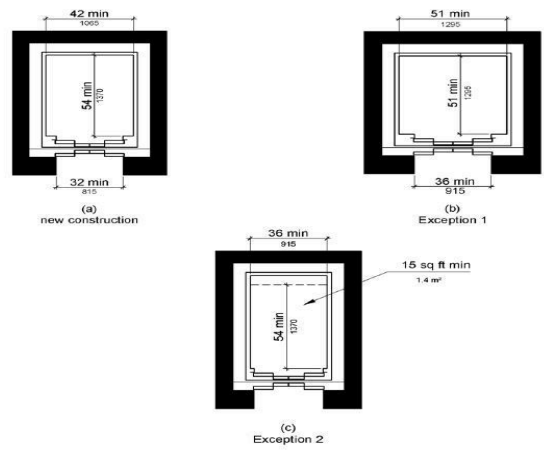
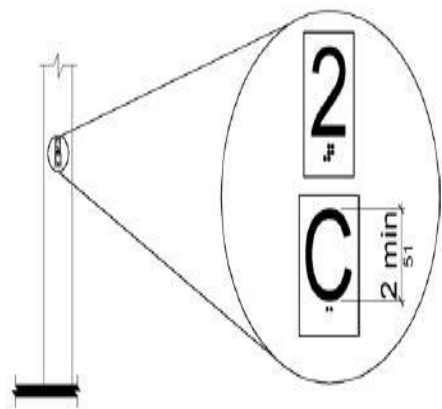
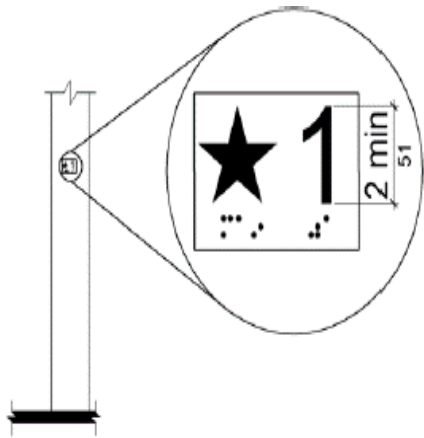


Figure 407.4.1 Elevator Car Dimensions

Table 407.4.7.1.3 Elevator Control Button Identification		
Control Button	Tactile Symbol	Braille Message
Emergency Stop		⠠⠠⠠⠠ "ST"OP Three cells
Alarm		⠠⠠⠠⠠ AL"AR"M Four cells
Door Open		⠠⠠⠠ OP"EN" Three cells
Door Close		⠠⠠⠠⠠ CLOSE Five cells
Main Entry Floor		⠠⠠⠠ MA"IN" Three cells
Phone		⠠⠠⠠⠠ PH"ONE" Four cells



Table 407.4.1 Elevator Car Dimensions (test version)				
Minimum Dimensions				
Door Location	Door Clear Width	Inside Car, Side to Side	Inside Car, Back Wall to Front Return	Inside Car, Back Wall to Inside Face of Door
Centered	42 inches	80 inches	51 inches	54 inches
	(1065 mm)	(2030 mm)	(1295 mm)	(1370 mm)
Side	36 inches	68 inches	51 inches	54 inches
(off-centered)	(915 mm)1	(1725 mm)	(1295 mm)	(1370 mm)
Any	36 inches	54 inches	80 inches	80 inches
	(915 mm)1	(1370 mm)	(2030 mm)	(2030 mm)
Any	36 inches	60 inches	60 inches	60 inches
	(915 mm)1	(1525 mm)2	(1525 mm)2	(1525 mm)2
1. A tolerance of minus 5/8 inch (16 mm) is permitted.				
2. Other car configurations that provide a turning space complying with 304 with the door closed shall be permitted.				



Abernethy Hall EXTERIOR

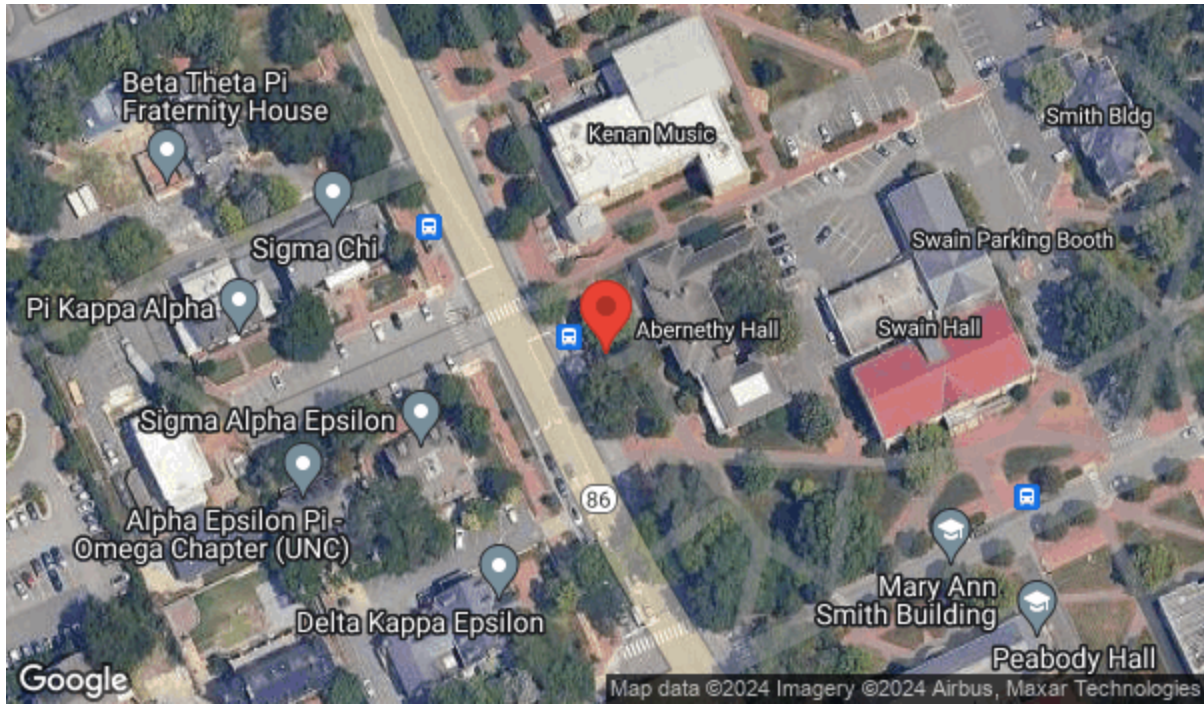
Assembly	Exterior Access Route
Type	Stairs
ADA Standard	505
Barrier Detail	Handrails are not compliant or are not provided.
Location Description	Columbia Street
Observed	May 20, 2024 by Brian.rogers@bureauveritas.com
Site Conditions	Handrails are not provided on the stairs.

Resolution

Install handrails on both sides of all stairs that comply with guidelines. Handrails shall be provided on both sides of stairs. Handrails shall be continuous within the full length of each stair flight or ramp run. Inside handrails on switchback or dogleg stairs and ramps shall be continuous between flights or runs. Top of gripping surfaces of handrails shall be 34" minimum and 38" maximum vertically above walking surfaces, stair nosings, and ramp surfaces. Handrails shall be at a consistent height above walking surfaces, stair nosings, and ramp surfaces. Clearance between handrail gripping surfaces and adjacent surfaces shall be 1-1/2" minimum. Handrail gripping surfaces shall be continuous along their length and shall not be obstructed along their tops or sides. The bottoms of handrail gripping surfaces shall not be obstructed for more than 20% of their length. Where provided, horizontal projections shall occur 1-1/2" minimum below the bottom of the handrail gripping surface. [EXCEPTIONS: 1. Where handrails are provided along walking surfaces with slopes not steeper than 1:20, the bottoms of handrail gripping surfaces shall be permitted to be obstructed along their entire length where they are integral to crash rails or bumper guards. 2. The distance between horizontal projections and the bottom of the gripping surface shall be permitted to be reduced by 1/8" for each 1/2" of additional handrail perimeter dimension that exceeds 4".] Handrail gripping surfaces with a circular cross section shall have an outside diameter of 1-1/4" minimum and 2" maximum. Handrail gripping surfaces with a non-circular cross section shall have a perimeter dimension of 4" minimum and 6-1/4" maximum, and a cross-section dimension of 2-1/4" maximum. Handrail gripping surfaces and any surfaces adjacent to them shall be free of sharp or abrasive elements and shall have rounded edges. Handrails shall not rotate within their fittings. Handrail gripping surfaces shall extend beyond and in the same direction of stair flights. At the top of a stair flight, handrails shall extend horizontally above the landing for 12" minimum beginning directly above the first riser nosing. At the bottom of a stair flight, handrails shall extend at the slope of the stair flight for a horizontal distance at least equal to one tread depth beyond the last riser nosing. Extensions shall return to a wall, guard, or the landing surface, or shall be continuous to the handrail of an adjacent stair flight. [EXCEPTIONS: 1. Extensions shall not be required for continuous handrails at the inside turn of switchback or dogleg stairs and ramps AND 3. In alterations, full extensions of handrails shall not be required where such extensions would be hazardous due to plan configuration.] [ADVISORY: It is advisable, but not required, to provide a handrail at a height designed for children. When children are the principal users in a building or facility (e.g., elementary schools), a second set of handrails at an appropriate height can assist them and aid in preventing accidents. A maximum height of 28" measured to the top of the gripping surface from the ramp surface or stair nosing is recommended for handrails designed for children. Sufficient vertical clearance between upper and lower handrails, 9" minimum, should be provided to help prevent entrapment.]

Quantity	Unit Cost	Total Cost
12 LF	203.75	\$ 2,445
Priority	1	

Map for Barrier ID: AX455995



1 +35.911415, -79.054570

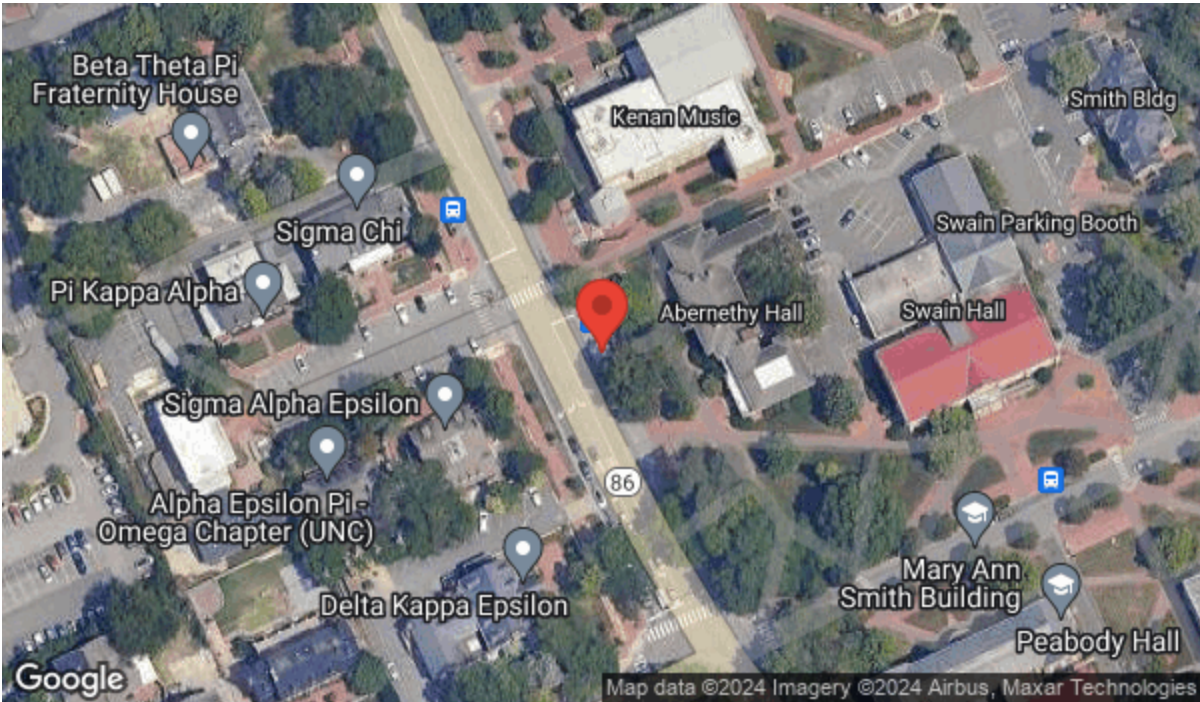
Photos for Barrier ID: AX455995



Abernethy Hall EXTERIOR

Assembly	Exterior Access Route	
Type	Stairs	
ADA Standard	2009 ANSI A117.1-504.5	
Barrier Detail		
NORTH CAROLINA: The stair tread, at the leading 2" at the stair nosing, does not have a visual contrast of dark-on-light or light-on-dark distinguished from the remainder of the tread.		
Location Description	Columbia Street	
Observed	May 20, 2024 by Brian.rogers@bureauveritas.com	
Site Conditions	The stair treads do not have visual contrast.	
Resolution		
Install a visual contrast on each stair tread at the nosing. At stair nosings, the leading 2" of tread shall have visual contrast of dark-on-light or light-on-dark from the remainder of the tread.		
Quantity	Unit Cost	Total Cost
5 Riser	125.00	\$ 625
Priority	1	

Map for Barrier ID: AX455998



Photos for Barrier ID: AX455998



Abernethy Hall EXTERIOR

Assembly	Exterior Access Route
Type	Stairs
ADA Standard	505
Barrier Detail	Handrails are not compliant or are not provided.
Location Description	Columbia Street Main Entrance
Observed	May 20, 2024 by Brian.rogers@bureauveritas.com

Site Conditions

The handrails end 3-1/2" short of the bottom step and are 32" above the nose of the steps.

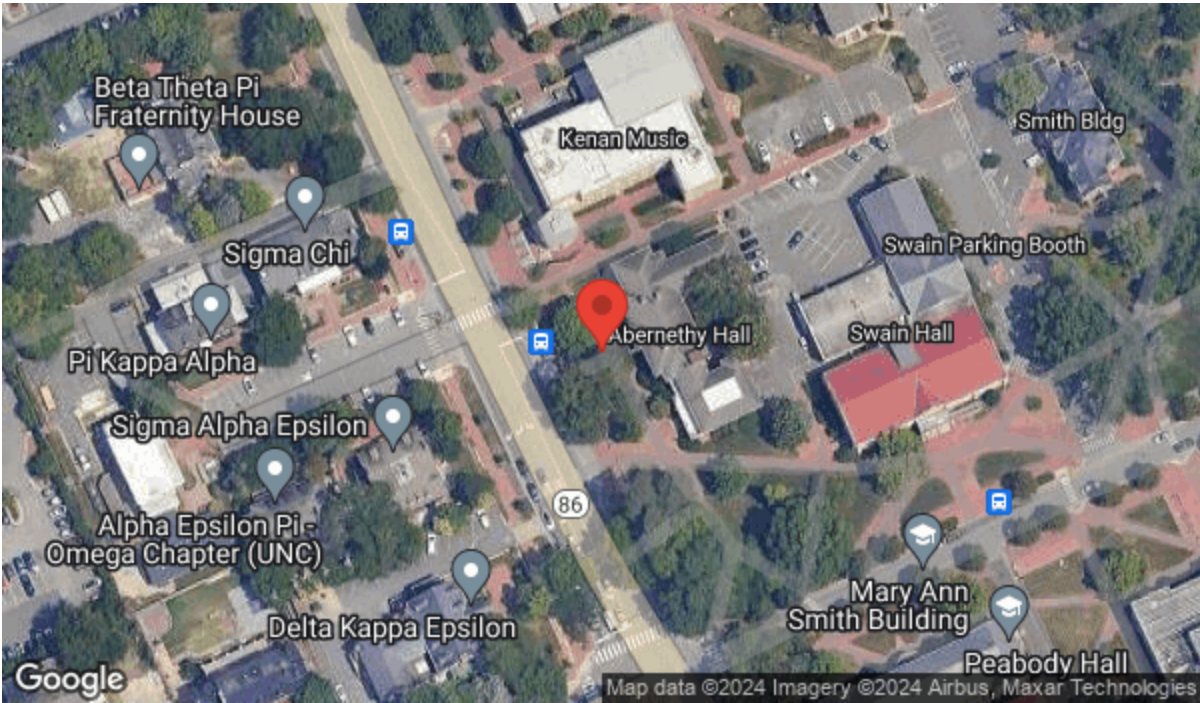
Handrail Height	32"
-----------------	-----

Resolution

Install handrails on both sides of all stairs that comply with guidelines. Handrails shall be provided on both sides of stairs. Handrails shall be continuous within the full length of each stair flight or ramp run. Inside handrails on switchback or dogleg stairs and ramps shall be continuous between flights or runs. Top of gripping surfaces of handrails shall be 34" minimum and 38" maximum vertically above walking surfaces, stair nosings, and ramp surfaces. Handrails shall be at a consistent height above walking surfaces, stair nosings, and ramp surfaces. Clearance between handrail gripping surfaces and adjacent surfaces shall be 1-1/2" minimum. Handrail gripping surfaces shall be continuous along their length and shall not be obstructed along their tops or sides. The bottoms of handrail gripping surfaces shall not be obstructed for more than 20% of their length. Where provided, horizontal projections shall occur 1-1/2" minimum below the bottom of the handrail gripping surface. [EXCEPTIONS: 1. Where handrails are provided along walking surfaces with slopes not steeper than 1:20, the bottoms of handrail gripping surfaces shall be permitted to be obstructed along their entire length where they are integral to crash rails or bumper guards. 2. The distance between horizontal projections and the bottom of the gripping surface shall be permitted to be reduced by 1/8" for each 1/2" of additional handrail perimeter dimension that exceeds 4".] Handrail gripping surfaces with a circular cross section shall have an outside diameter of 1-1/4" minimum and 2" maximum. Handrail gripping surfaces with a non-circular cross section shall have a perimeter dimension of 4" minimum and 6-1/4" maximum, and a cross-section dimension of 2-1/4" maximum. Handrail gripping surfaces and any surfaces adjacent to them shall be free of sharp or abrasive elements and shall have rounded edges. Handrails shall not rotate within their fittings. Handrail gripping surfaces shall extend beyond and in the same direction of stair flights. At the top of a stair flight, handrails shall extend horizontally above the landing for 12" minimum beginning directly above the first riser nosing. At the bottom of a stair flight, handrails shall extend at the slope of the stair flight for a horizontal distance at least equal to one tread depth beyond the last riser nosing. Extensions shall return to a wall, guard, or the landing surface, or shall be continuous to the handrail of an adjacent stair flight. [EXCEPTIONS: 1. Extensions shall not be required for continuous handrails at the inside turn of switchback or dogleg stairs and ramps AND 3. In alterations, full extensions of handrails shall not be required where such extensions would be hazardous due to plan configuration.] [ADVISORY: It is advisable, but not required, to provide a handrail at a height designed for children. When children are the principal users in a building or facility (e.g., elementary schools), a second set of handrails at an appropriate height can assist them and aid in preventing accidents. A maximum height of 28" measured to the top of the gripping surface from the ramp surface or stair nosing is recommended for handrails designed for children. Sufficient vertical clearance between upper and lower handrails, 9" minimum, should be provided to help prevent entrapment.]

Quantity	Unit Cost	Total Cost
14 LF	203.75	\$ 2,853

Map for Barrier ID: AX455996



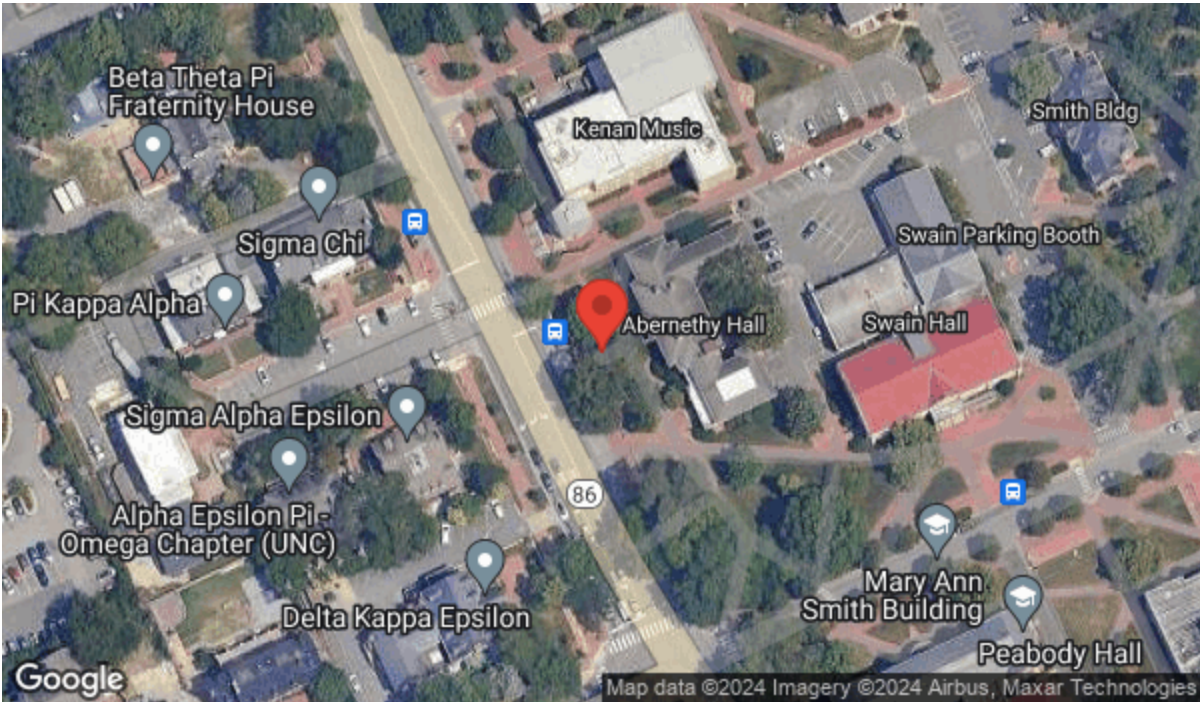
2 +35.911428, -79.054508



Abernethy Hall EXTERIOR

Assembly	Exterior Access Route	
Type	Stairs	
ADA Standard	2009 ANSI A117.1-504.5	
Barrier Detail		
NORTH CAROLINA: The stair tread, at the leading 2" at the stair nosing, does not have a visual contrast of dark-on-light or light-on-dark distinguished from the remainder of the tread.		
Location Description	Columbia Street Main Entrance	
Observed	May 20, 2024 by Brian.rogers@bureauveritas.com	
Site Conditions	The stair treads do not have visual contrast.	
Resolution		
Install a visual contrast on each stair tread at the nosing. At stair nosings, the leading 2" of tread shall have visual contrast of dark-on-light or light-on-dark from the remainder of the tread.		
Quantity	Unit Cost	Total Cost
6 Riser	125.00	\$ 750
Priority	1	

Map for Barrier ID: AX455997



Photos for Barrier ID: AX455997



Abernethy Hall EXTERIOR

Assembly	Exterior Access Route
Type	Exterior Accessible Route
ADA Standard	403.3
Barrier Detail	The accessible route has cross slopes greater than 1:50 (2%).
Location Description	Exterior Brick Walk
Observed	May 20, 2024 by Brian.rogers@bureauveritas.com

Site Conditions

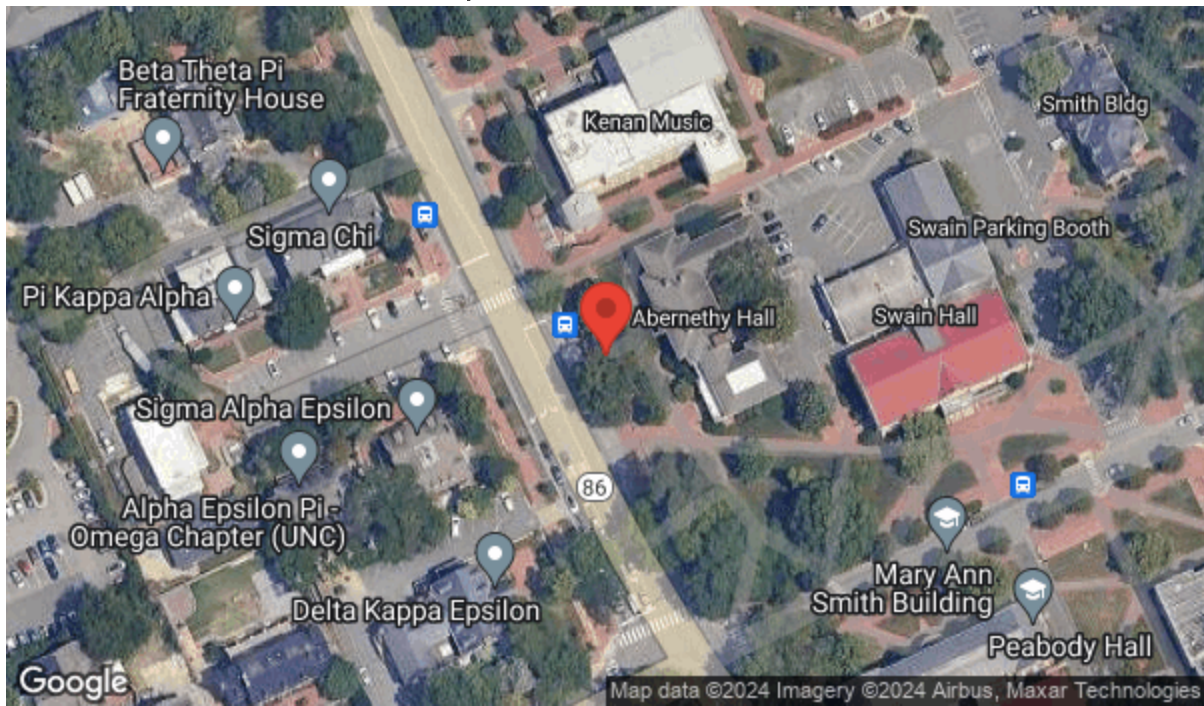
The brick walkway has heaved in section creating cross slopes between 2.7% and 7.3% for a length of 300' by 7'

Highest Cross Slope	7.3%
Lowest Cross Slope	2.7%
Length	300'
Width	7'

Resolution

The walkway should be graded to a maximum 1:50 (2%) cross slope. An accessible route has maximum 1:20 (5%) running slope and maximum 1:50 (2%) cross slope. [EXCEPTION: Cross slopes not exceeding 1:48 (2.08%) are permitted.] The clear width of walking surfaces shall be 36" minimum. [EXCEPTION: The clear width shall be permitted to be reduced to 32" minimum for a length of 24" maximum provided that reduced width segments are separated by segments that are 48" long minimum and 36" wide minimum.] Where grading to maximum running slope of 1:20 (5% running slope) is not possible, provide a compliant ramped surface within the walkway with maximum slope 1:12 (8.33%) and maximum ramp run rise of 6" without handrails. If a ramped surface with running slopes greater than 1:20 (5%) and maximum 1:12 (8.33%) rises more than 6", handrails are required. The cost estimate for this barrier removal is based on grading the running slope to maximum 1:20 (5%). The quantity and order of magnitude cost estimate provided for this barrier are limited to the extent of the area identified as non-compliant. Additional costs that may be associated with removal of the barrier are not included.

Quantity	Unit Cost	Total Cost
2100 SF	42.64	\$ 89,544
Priority	1	



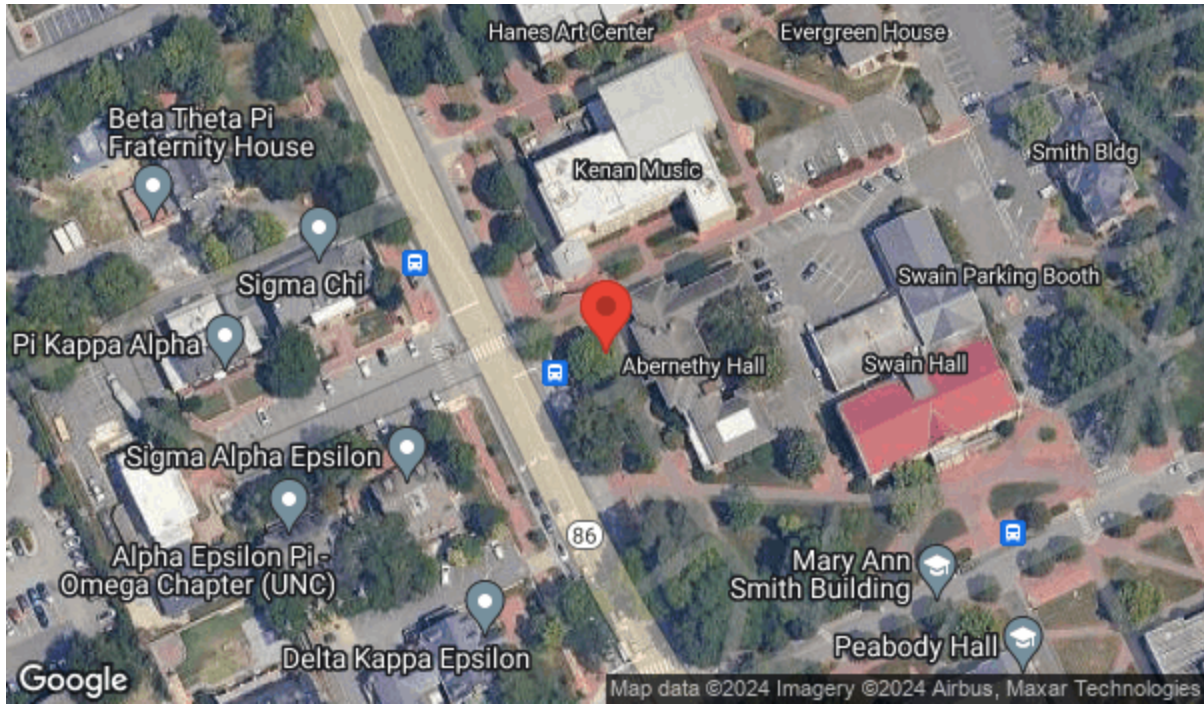
5 +35.911384, -79.054562



Abernethy Hall EXTERIOR

Assembly	Exterior Access Route	
Type	Protruding Object	
ADA Standard	403.5.1; 403.5.3	
Barrier Detail		
Sidewalk does not meet the 36" minimum clear width requirement (60" minimum where passing areas are present).		
Location Description	Exterior Brick Walk	
Observed	May 20, 2024 by Brian.rogers@bureauveritas.com	
Site Conditions	Vegetation reduces the brick walkway to 16" to 24" in 2 spots each 10' wide	
Resolution		
Remove vegetation that is encroaching into the required clear width. The sidewalk should be removed and replaced with a compliant sidewalk. The clear width of walking surfaces shall be 36" minimum. [EXCEPTION: The clear width shall be permitted to be reduced to 32" minimum for a length of 24" maximum provided that reduced width segments are separated by segments that are 48" long minimum and 36" wide minimum.] An accessible route has maximum 1:20 (5%) running slope and maximum 1:50 (2%) cross slope. [EXCEPTION: Cross slopes not greater than 1:48 (2.08%) are permitted.]		
Quantity	Unit Cost	Total Cost
2 EA	125.00	\$ 250
Priority	1	

Map for Barrier ID: AX456000



6 +35.911493, -79.054533

Photos for Barrier ID: AX456000



Abernethy Hall INTERIOR

Assembly Interior Access Route

Type Door

ADA Standard 404.2.4; Table 404.2.4.1

Barrier Detail

The pull side of the accessible door does not have the required maneuvering clearances.

Location Description Hallway Door to 120A

Observed May 20, 2024 by Brian.rogers@bureauveritas.com

Site Conditions

For a front approach on the pull side of the door on the latch side there is 15 inches of clearance to a wall.

Dimensions 15"

Resolution

Redesign to provide the required maneuvering clearance at the pull side of the door. The required depth of the maneuvering clearance is 60" minimum. The required side clearance is 18" minimum on the latch side of the door. Maneuvering clearance shall extend the full width of the doorway and the required latch side clearance. Floor or ground space within the required maneuvering clearance shall be maximum 1:48 (2.08%) slope. Changes in level are not permitted.

Quantity	Unit Cost	Total Cost
1 EA	1,562.50	\$ 1,563

Priority 1

Photos for Barrier ID: AX456042



Abernethy Hall INTERIOR

Assembly	Interior Access Route
Type	Door
ADA Standard	309, 404.2.7

Barrier Detail

The hardware at the accessible door (including sliding doors - both sides) requires tight grasping, pinching or twisting of the wrist to operate OR is mounted below 34" or above 48".

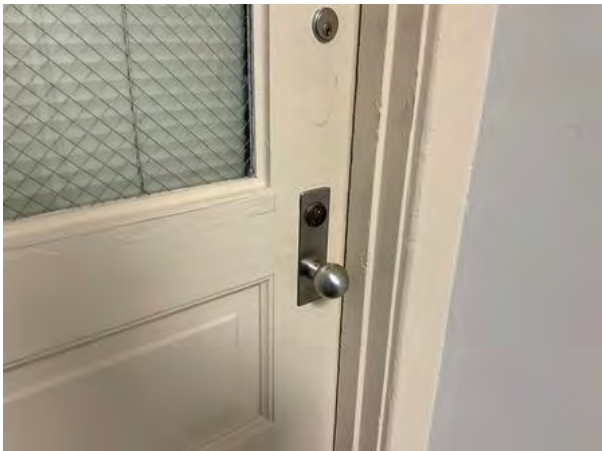
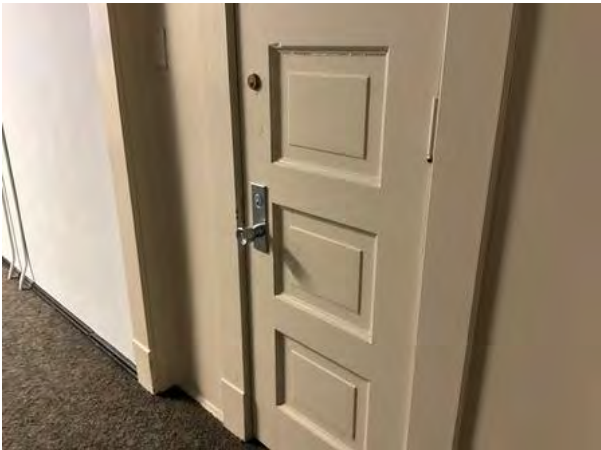
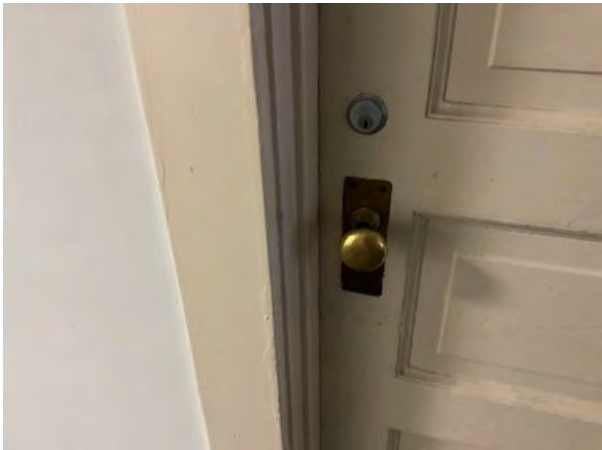
Location Description	Interior Doors
Observed	May 20, 2024 by Brian.rogers@bureauveritas.com

Site Conditions

Ball style handles require tight grasp to operate. There are twenty-six Ball style door handles on first floor and fifteen on the second floor.

Resolution
Remove hardware and replace with hardware that has a shape that is easy to grasp such as lever, push-type or U-shaped handles. Handles, pulls, latches, locks, and other operable parts on doors and gates shall be compliant. Operable parts of such hardware shall be 34" minimum and 48" maximum above the finish floor or ground. Where sliding doors are in the fully open position, operating hardware shall be exposed and usable from both sides. [EXCEPTIONS: 1. Existing locks shall be permitted in any location at existing glazed doors without stiles, existing overhead rolling doors or grilles, and similar existing doors or grilles that are designed with locks that are activated only at the top or bottom rail. 2. Access gates in barrier walls and fences protecting pools, spas, and hot tubs shall be permitted to have operable parts of the release of latch on self-latching devices at 54" maximum above the finish floor or ground provided the self-latching devices are not also self-locking devices and operated by means of a key, electronic opener, or integral combination lock.]

Quantity	Unit Cost	Total Cost
41 EA	366.25	\$ 15,016
Priority	1	



Abernethy Hall INTERIOR

Assembly Interior Access Route

Type Stairs

ADA Standard 2009 ANSI A117.1-504.5

Barrier Detail

NORTH CAROLINA: The stair tread, at the leading 2" at the stair nosing, does not have a visual contrast of dark-on-light or light-on-dark distinguished from the remainder of the tread.

Location Description Main Staircase

Observed May 20, 2024 by Brian.rogers@bureauveritas.com

Site Conditions Stair treads do not have contrast at the nose of the steps

Resolution

Install a visual contrast on each stair tread at the nosing. At stair nosings, the leading 2" of tread shall have visual contrast of dark-on-light or light-on-dark from the remainder of the tread.

Quantity	Unit Cost	Total Cost
27 Riser	125.00	\$ 3,375
Priority	1	

Photos for Barrier ID: AX456045



Abernethy Hall INTERIOR

Assembly	Interior Access Route
Type	Stairs
ADA Standard	505
Barrier Detail	Handrails are not compliant.
Location Description	Main Staircase
Observed	May 20, 2024 by Brian.rogers@bureauveritas.com

Site Conditions

Handrails are missing on the wall side on the top five steps on each side of the grand staircase. Existing handrail is 28 inches above the nose of the steps.

Handrail Height	28"
-----------------	-----

Resolution

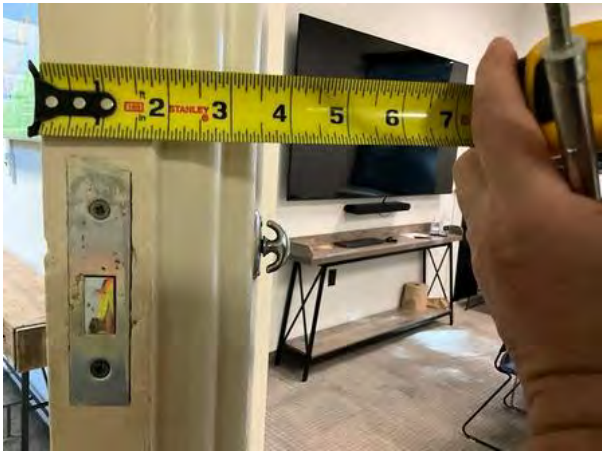
Install compliant handrails on both sides of the stairway. Inside handrails on switchback or dogleg stairs shall be continuous between runs. Top of gripping surfaces of handrails shall be 34" minimum and 38" maximum vertically above stair nosings. Handrails shall be at a consistent height above ramp surfaces. Clearance between handrail gripping surfaces and adjacent surfaces shall be 1-1/2" minimum. Handrail gripping surfaces shall be continuous along their length and shall not be obstructed along their tops or sides. The bottoms of handrail gripping surfaces shall not be obstructed for more than 20% of their length. Where provided, horizontal projections shall occur 1-1/2" minimum below the bottom of the handrail gripping surface. [EXCEPTION: The distance between horizontal projections and the bottom of the gripping surface shall be permitted to be reduced by 1/8" for each 1/2" of additional handrail perimeter dimension that exceeds 4".] Handrail gripping surfaces with a circular cross section shall have an outside diameter of 1-1/4" minimum and 2" maximum. Handrail gripping surfaces with a non-circular cross section shall have a perimeter dimension of 4" minimum and 6-1/4" maximum, and a cross-section dimension of 2-1/4" maximum. Handrail gripping surfaces and any surfaces adjacent to them shall be free of sharp or abrasive elements and shall have rounded edges. Handrails shall not rotate within their fittings. Handrail gripping surfaces shall extend beyond and in the same direction of stair flights. [EXCEPTIONS: 1. Extensions shall not be required for continuous handrails at the inside turn of switchback or dogleg ramps AND 3. In alterations, full extensions of handrails shall not be required where such extensions would be hazardous due to plan configuration.] At the top of a stair flight, handrails shall extend horizontally above the landing for 12" minimum beginning directly above the first riser nosing. At the bottom of a stair flight, handrails shall extend at the slope of the stair flight for a horizontal distance at least equal to one tread depth beyond the last riser nosing. Extensions shall return to a wall, guard, or the landing surface, or shall be continuous to the handrail of an adjacent stair flight. Removal of this barrier is required if the stairs are part of the required accessible means of egress from the accessible space, per emergency egress plans approved by the administrating local authority.

Quantity	Unit Cost	Total Cost
60 LF	203.75	\$ 12,225
Priority	1	



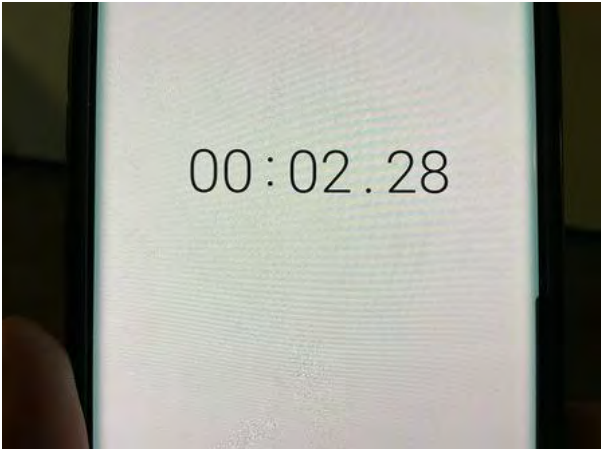
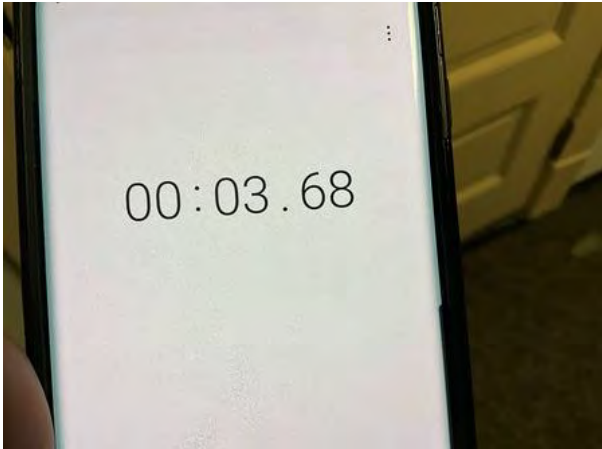
Abernethy Hall INTERIOR

Assembly	Interior Access Route	
Type	Door	
ADA Standard	404.2.9	
Barrier Detail		
The opening force required to open the accessible, hinged, non-fire door is more than 5 pounds.		
Location Description	Room 102	
Observed	May 20, 2024 by Brian.rogers@bureauveritas.com	
Site Conditions	The two 3 1/2" thick sound proof doors take 16 pounds of pressure to open.	
Resolution		
Adjust the closer or replace with a door that requires no more than 5 pounds of force for pushing or pulling the door open. The force at the latch, the force to set the door in motion, and the force to fully open the door shall be maximum 5 pounds. These forces do not apply to the force required to retract latch bolts or disengage other devices that hold the door or gate in a closed position.		
Quantity	Unit Cost	Total Cost
2 EA	458.00	\$ 916
Priority	1	



Abernethy Hall INTERIOR

Assembly	Interior Access Route	
Type	Door	
ADA Standard	404.2.8	
Barrier Detail		
The accessible door with door closer has a sweep period of less than 5 seconds from 90 degrees to a position 12 degrees from latch.		
Location Description	Room 102	
Observed	May 20, 2024 by Brian.rogers@bureauveritas.com	
Site Conditions		
The two 3 1/2" thick sound proof doors take 2.28 seconds and 3.68 seconds to close from 90° to 12° off of the latch.		
Resolution		
Adjust closer or remove and replace closer to ensure that the door has a closure time of at least 5 seconds within 12 degrees of the latch. Door closers and gate closers shall be adjusted so that from an open position of 90 degrees, the time required to move the door to a position of 12 degrees from the latch is 5 seconds minimum.		
Quantity	Unit Cost	Total Cost
2 EA	457.50	\$ 915
Priority	1	



Abernethy Hall INTERIOR

Assembly Interior Access Route

Type Door

ADA Standard 404.2.4; Table 404.2.4.1

Barrier Detail

The pull side of the accessible door does not have the required maneuvering clearances.

Location Description Room 103

Observed May 20, 2024 by Brian.rogers@bureauveritas.com

Site Conditions

For a forward approach on the pull side of the door the latch side clearance is 4" to a cabinet.

Dimensions 4"

Resolution

Relocate the cabinet out of the required maneuvering clearance at the door. Redesign to provide the required maneuvering clearance at the pull side of the door. The required depth of the maneuvering clearance is 60" minimum. The required side clearance is 18" minimum on the latch side of the door. Maneuvering clearance shall extend the full width of the doorway and the required latch side clearance. Floor or ground space within the required maneuvering clearance shall be maximum 1:48 (2.08%) slope. Changes in level are not permitted.

Quantity	Unit Cost	Total Cost
1 EA	125.00	\$ 125

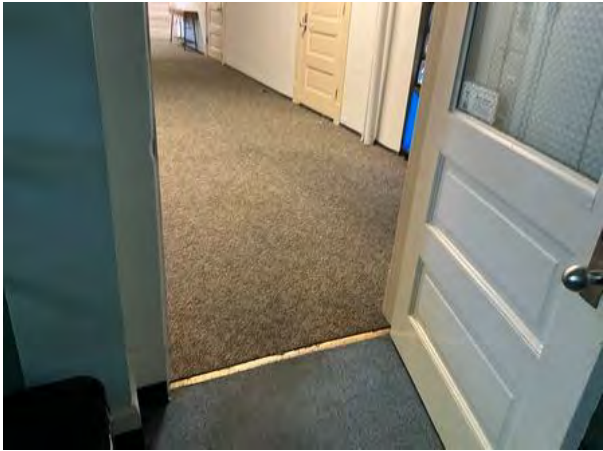
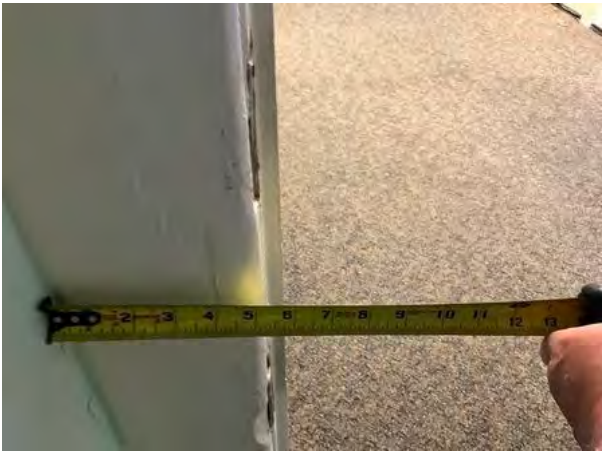
Priority 1

Photos for Barrier ID: AX456014



Abernethy Hall INTERIOR

Assembly	Interior Access Route	
Type	Door	
ADA Standard	404.2.4; Table 404.2.4.1	
Barrier Detail		
The pull side of the accessible door does not have the required maneuvering clearances.		
Location Description	Room 105	
Observed	May 20, 2024 by Brian.rogers@bureauveritas.com	
Site Conditions		
For a front approach on the pull side of the door the latch side clearance is 5 1/2" to a 7" deep column.		
Dimensions	5 1/2"	
Resolution		
Redesign to provide the required maneuvering clearance at the pull side of the door. The required depth of the maneuvering clearance is 60" minimum. The required side clearance is 18" minimum on the latch side of the door. Maneuvering clearance shall extend the full width of the doorway and the required latch side clearance. Floor or ground space within the required maneuvering clearance shall be maximum 1:48 (2.08%) slope. Changes in level are not permitted.		
Quantity	Unit Cost	Total Cost
1 EA	1,562.50	\$ 1,563
Priority	1	



Abernethy Hall INTERIOR

Assembly	Interior Access Route
Type	Door
ADA Standard	307.4, 404.2.3
Barrier Detail	The door has less than 32" clear width.
Location Description	Room 105 interior door
Observed	May 20, 2024 by Brian.rogers@bureauveritas.com
Site Conditions	The interior office door is 29 1/2" wide.
Width	29 1/2"

Resolution

Remove and replace with a door that has a minimum clear opening of 32". Door openings shall provide a clear width of 32" minimum. Clear openings of doorways with swinging doors shall be measured between the face of the door and the stop, with the door open 90 degrees. Openings more than 24" deep shall provide a clear opening of 36" minimum. There shall be no projections into the required clear opening width lower than 34" above the finish floor or ground. Projections into the clear opening width between 34" and 80" above the finish floor or ground shall not exceed 4". [EXCEPTIONS: 1. In alterations, a projection of 5/8" maximum into the required clear width shall be permitted for the latch side stop. 2. Door closers and door stops shall be permitted to be 78" minimum above the finish floor or ground.]

Quantity	Unit Cost	Total Cost
1 EA	3,250.00	\$ 3,250
Priority	1	

Photos for Barrier ID: AX456013



Abernethy Hall INTERIOR

Assembly Interior Access Route

Type Door

ADA Standard 404.2.4; Table 404.2.4.1

Barrier Detail

The pull side of the accessible door does not have the required maneuvering clearances.

Location Description Room 115

Observed May 20, 2024 by Brian.rogers@bureauveritas.com

Site Conditions

For a forward approach on the pull side of the door the latch side clearance is 7" to a table

Dimensions 7"

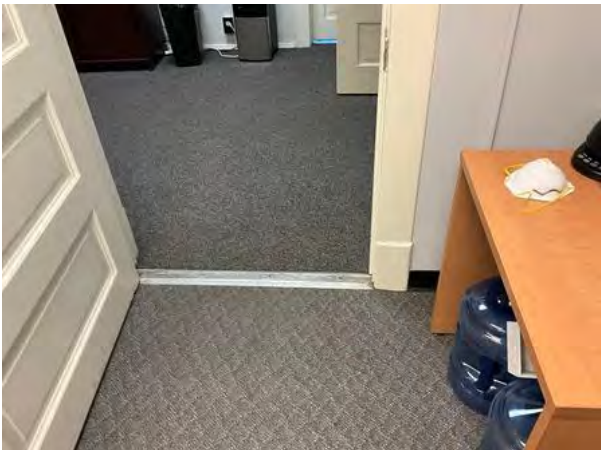
Resolution

Relocate furniture to provide the required maneuvering clearance at the pull side of the door. The required depth of the maneuvering clearance is 60" minimum. The required side clearance is 18" minimum on the latch side of the door. Maneuvering clearance shall extend the full width of the doorway and the required latch side clearance. Floor or ground space within the required maneuvering clearance shall be maximum 1:48 (2.08%) slope. Changes in level are not permitted.

Quantity	Unit Cost	Total Cost
1 EA	125.00	\$ 125

Priority 1

Photos for Barrier ID: AX456027



Abernethy Hall INTERIOR

Assembly Interior Access Route

Type Door

ADA Standard 404.2.4; Table 404.2.4.1

Barrier Detail

The pull side of the accessible door does not have the required maneuvering clearances.

Location Description Room 116 Mailroom

Observed May 20, 2024 by Brian.rogers@bureauveritas.com

Site Conditions

For a forward approach on the pull side of the door the latch side clearance is 5" to a wall.

Dimensions 5"

Resolution

Redesign to provide the required maneuvering clearance at the pull side of the door. The required depth of the maneuvering clearance is 60" minimum. The required side clearance is 18" minimum on the latch side of the door. Maneuvering clearance shall extend the full width of the doorway and the required latch side clearance. Floor or ground space within the required maneuvering clearance shall be maximum 1:48 (2.08%) slope. Changes in level are not permitted.

Quantity	Unit Cost	Total Cost
1 EA	1,562.50	\$ 1,563

Priority 1

Photos for Barrier ID: AX456028



Abernethy Hall INTERIOR

Assembly Interior Access Route

Type Door

ADA Standard 404.2.4; Table 404.2.4.1

Barrier Detail

The pull side of the accessible door does not have the required maneuvering clearances.

Location Description Room 118

Observed May 20, 2024 by Brian.rogers@bureauveritas.com

Site Conditions

For a front approach on the pull side of the door the latch side clearance is 6" to a wall.

Dimensions 6"

Resolution

Redesign to provide the required maneuvering clearance at the pull side of the door. The required depth of the maneuvering clearance is 60" minimum. The required side clearance is 18" minimum on the latch side of the door. Maneuvering clearance shall extend the full width of the doorway and the required latch side clearance. Floor or ground space within the required maneuvering clearance shall be maximum 1:48 (2.08%) slope. Changes in level are not permitted.

Quantity	Unit Cost	Total Cost
1 EA	1,562.50	\$ 1,563

Priority 1

Photos for Barrier ID: AX456037



Abernethy Hall INTERIOR

Assembly	Interior Access Route	
Type	Door	
ADA Standard	404.2.4; Table 404.2.4.1	
Barrier Detail		
The pull side of the accessible door does not have the required maneuvering clearances.		
Location Description	Room 119A	
Observed	May 20, 2024 by Brian.rogers@bureauveritas.com	
Site Conditions		
On the pull side of the door the hinge side the clear floor space clearance is 37" to a file cabinet.		
Dimensions	37"	
Resolution		
Relocate furniture to provide the required maneuvering clearance at the pull side of the door. The required depth of the maneuvering clearance is 60" minimum. The required side clearance is 18" minimum on the latch side of the door. Maneuvering clearance shall extend the full width of the doorway and the required latch side clearance. Floor or ground space within the required maneuvering clearance shall be maximum 1:48 (2.08%) slope. Changes in level are not permitted.		
Quantity	Unit Cost	Total Cost
1 EA	125.00	\$ 125
Priority	1	

Photos for Barrier ID: AX456029



Abernethy Hall INTERIOR

Assembly Interior Access Route

Type Door

ADA Standard 404.2.4; Table 404.2.4.1

Barrier Detail

The pull side of the accessible door does not have the required maneuvering clearances.

Location Description Room 120

Observed May 20, 2024 by Brian.rogers@bureauveritas.com

Site Conditions

For a front approach on the pull side of the door the latch side clearance is 5" to a wall.

Dimensions 5"

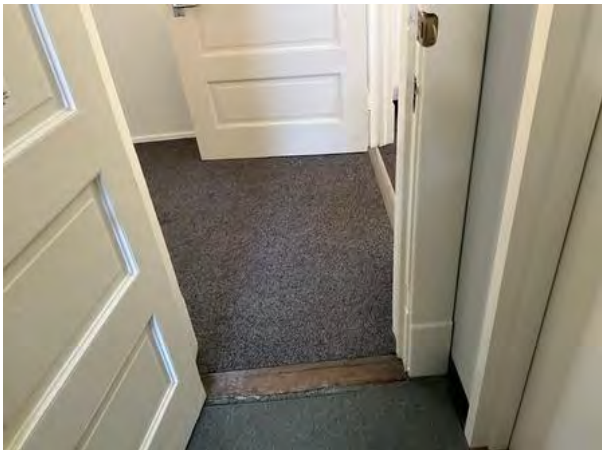
Resolution

Redesign to provide the required maneuvering clearance at the pull side of the door. The required depth of the maneuvering clearance is 60" minimum. The required side clearance is 18" minimum on the latch side of the door. Maneuvering clearance shall extend the full width of the doorway and the required latch side clearance. Floor or ground space within the required maneuvering clearance shall be maximum 1:48 (2.08%) slope. Changes in level are not permitted.

Quantity	Unit Cost	Total Cost
1 EA	1,562.50	\$ 1,563

Priority 1

Photos for Barrier ID: AX456040



Abernethy Hall INTERIOR

Assembly	Interior Access Route
Type	Door
ADA Standard	307.4, 404.2.3
Barrier Detail	The door has less than 32" clear width.
Location Description	Room 120
Observed	May 20, 2024 by Brian.rogers@bureauveritas.com

Site Conditions

The door is 25 1/2 inches wide. Note: there is a 35 1/2 inch door between rooms 120 and 120A

Width	25 1/2"
-------	---------

Resolution

Remove and replace with a door that has a minimum clear opening of 32". Door openings shall provide a clear width of 32" minimum. Clear openings of doorways with swinging doors shall be measured between the face of the door and the stop, with the door open 90 degrees. Openings more than 24" deep shall provide a clear opening of 36" minimum. There shall be no projections into the required clear opening width lower than 34" above the finish floor or ground. Projections into the clear opening width between 34" and 80" above the finish floor or ground shall not exceed 4". [EXCEPTIONS: 1. In alterations, a projection of 5/8" maximum into the required clear width shall be permitted for the latch side stop. 2. Door closers and door stops shall be permitted to be 78" minimum above the finish floor or ground.]

Quantity	Unit Cost	Total Cost
1 EA	3,250.00	\$ 3,250
Priority	1	



Abernethy Hall INTERIOR

Assembly Interior Access Route

Type Door

ADA Standard 404.2.4; Table 404.2.4.1

Barrier Detail

The pull side of the accessible door does not have the required maneuvering clearances.

Location Description Room 121

Observed May 20, 2024 by Brian.rogers@bureauveritas.com

Site Conditions

For a front approach on the pull side of the door the latch side clearance is 7" to a desk

Dimensions 7"

Resolution

Relocate furniture to provide the required maneuvering clearance at the pull side of the door. The required depth of the maneuvering clearance is 60" minimum. The required side clearance is 18" minimum on the latch side of the door. Maneuvering clearance shall extend the full width of the doorway and the required latch side clearance. Floor or ground space within the required maneuvering clearance shall be maximum 1:48 (2.08%) slope. Changes in level are not permitted.

Quantity	Unit Cost	Total Cost
1 EA	125.00	\$ 125

Priority 1

Photos for Barrier ID: AX456030



Abernethy Hall INTERIOR

Assembly Interior Access Route

Type Door

ADA Standard 404.2.4; Table 404.2.4.1

Barrier Detail

The pull side of the accessible door does not have the required maneuvering clearances.

Location Description Room 122

Observed May 20, 2024 by Brian.rogers@bureauveritas.com

Site Conditions

For a front approach on the pull side of the door on the latch side there is 15 inches of clearance to a wall.

Dimensions 15"

Resolution

Redesign to provide the required maneuvering clearance at the pull side of the door. The required depth of the maneuvering clearance is 60" minimum. The required side clearance is 18" minimum on the latch side of the door. Maneuvering clearance shall extend the full width of the doorway and the required latch side clearance. Floor or ground space within the required maneuvering clearance shall be maximum 1:48 (2.08%) slope. Changes in level are not permitted.

Quantity	Unit Cost	Total Cost
1 EA	1,562.50	\$ 1,563

Priority 1

Photos for Barrier ID: AX456043



Abernethy Hall INTERIOR

Assembly	Interior Access Route
Type	Door
ADA Standard	307.4, 404.2.3
Barrier Detail	The door has less than 32" clear width.
Location Description	Room 202A
Observed	May 20, 2024 by Brian.rogers@bureauveritas.com
Site Conditions	The door is 26 3/4 inches wide.
Width	26 3/4"

Resolution

Remove and replace with a door that has a minimum clear opening of 32". Door openings shall provide a clear width of 32" minimum. Clear openings of doorways with swinging doors shall be measured between the face of the door and the stop, with the door open 90 degrees. Openings more than 24" deep shall provide a clear opening of 36" minimum. There shall be no projections into the required clear opening width lower than 34" above the finish floor or ground. Projections into the clear opening width between 34" and 80" above the finish floor or ground shall not exceed 4". [EXCEPTIONS: 1. In alterations, a projection of 5/8" maximum into the required clear width shall be permitted for the latch side stop. 2. Door closers and door stops shall be permitted to be 78" minimum above the finish floor or ground.]

Quantity	Unit Cost	Total Cost
1 EA	3,250.00	\$ 3,250

Priority	1
----------	---

Photos for Barrier ID: AX456060



Abernethy Hall INTERIOR

Assembly Interior Access Route

Type Door

ADA Standard 404.2.4; Table 404.2.4.1

Barrier Detail

The pull side of the accessible door does not have the required maneuvering clearances.

Location Description Room 202B

Observed May 20, 2024 by Brian.rogers@bureauveritas.com

Site Conditions

For a front approach on the pull side, the door on the latch side there is 9 inches of clearance to a closet.

Dimensions 9"

Resolution

Redesign to provide the required maneuvering clearance at the pull side of the door. The required depth of the maneuvering clearance is 60" minimum. The required side clearance is 18" minimum on the latch side of the door. Maneuvering clearance shall extend the full width of the doorway and the required latch side clearance. Floor or ground space within the required maneuvering clearance shall be maximum 1:48 (2.08%) slope. Changes in level are not permitted.

Quantity	Unit Cost	Total Cost
1 EA	1,562.50	\$ 1,563

Priority 1

Photos for Barrier ID: AX456064



Abernethy Hall INTERIOR

Assembly	Interior Access Route
Type	Door
ADA Standard	307.4, 404.2.3
Barrier Detail	The door has less than 32" clear width.
Location Description	Room 203A
Observed	May 20, 2024 by Brian.rogers@bureauveritas.com
Site Conditions	The door is 29 inches wide.
Width	29"

Resolution

Remove and replace with a door that has a minimum clear opening of 32". Door openings shall provide a clear width of 32" minimum. Clear openings of doorways with swinging doors shall be measured between the face of the door and the stop, with the door open 90 degrees. Openings more than 24" deep shall provide a clear opening of 36" minimum. There shall be no projections into the required clear opening width lower than 34" above the finish floor or ground. Projections into the clear opening width between 34" and 80" above the finish floor or ground shall not exceed 4". [EXCEPTIONS: 1. In alterations, a projection of 5/8" maximum into the required clear width shall be permitted for the latch side stop. 2. Door closers and door stops shall be permitted to be 78" minimum above the finish floor or ground.]

Quantity	Unit Cost	Total Cost
1 EA	3,250.00	\$ 3,250

Priority	1
----------	---

Photos for Barrier ID: AX456062



Abernethy Hall INTERIOR

Assembly Interior Access Route

Type Door

ADA Standard 404.2.4; Table 404.2.4.1

Barrier Detail

The pull side of the accessible door does not have the required maneuvering clearances.

Location Description Room 204A

Observed May 20, 2024 by Brian.rogers@bureauveritas.com

Site Conditions

For a front approach on the pull side of the door on the latch side there is 5 inches of clearance to a desk.

Dimensions 5"

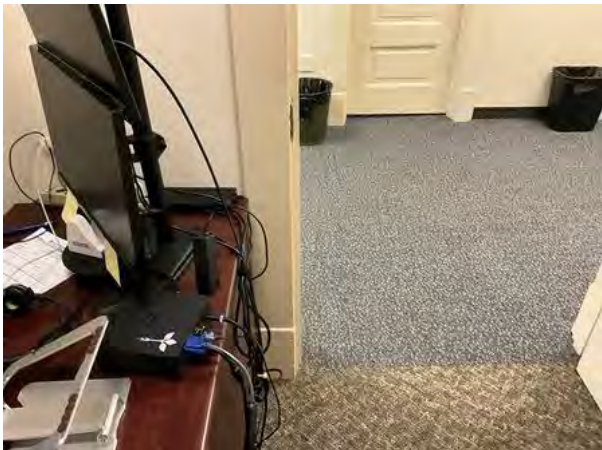
Resolution

Relocate furniture to provide the required maneuvering clearance at the pull side of the door. The required depth of the maneuvering clearance is 60" minimum. The required side clearance is 18" minimum on the latch side of the door. Maneuvering clearance shall extend the full width of the doorway and the required latch side clearance. Floor or ground space within the required maneuvering clearance shall be maximum 1:48 (2.08%) slope. Changes in level are not permitted.

Quantity	Unit Cost	Total Cost
1 EA	125.00	\$ 125

Priority 1

Photos for Barrier ID: AX456063



Abernethy Hall INTERIOR

Assembly Interior Access Route

Type Door

ADA Standard 404.2.4; Table 404.2.4.1

Barrier Detail

The pull side of the accessible door does not have the required maneuvering clearances.

Location Description Room 218

Observed May 20, 2024 by Brian.rogers@bureauveritas.com

Site Conditions

For a front approach on the pull side of the door, the latch side has 16" to a wall.

Dimensions 16"

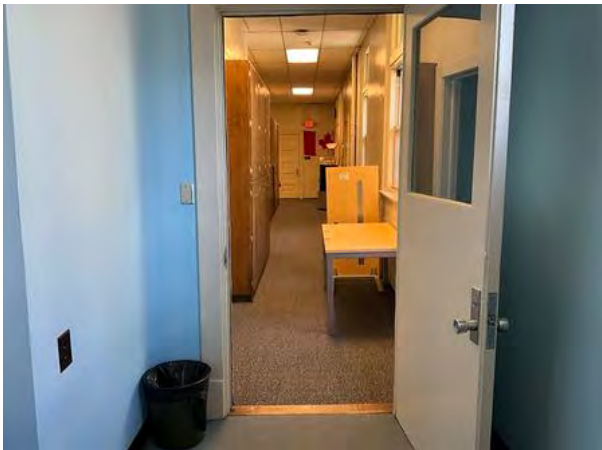
Resolution

Redesign to provide the required maneuvering clearance at the pull side of the door. The required depth of the maneuvering clearance is 60" minimum. The required side clearance is 18" minimum on the latch side of the door. Maneuvering clearance shall extend the full width of the doorway and the required latch side or clearance. Floor or ground space within the required maneuvering clearance shall be maximum 1:48 (2.08%) slope. Changes in level are not permitted.

Quantity	Unit Cost	Total Cost
1 EA	1,562.50	\$ 1,563

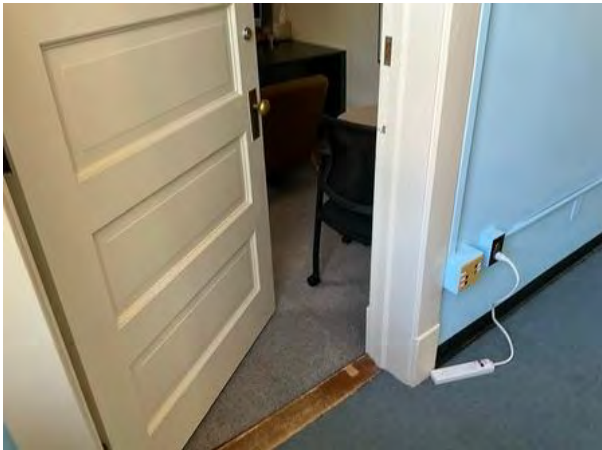
Priority 1

Photos for Barrier ID: AX456074



Abernethy Hall INTERIOR

Assembly	Interior Access Route	
Type	Door	
ADA Standard	404.2.9	
Barrier Detail		
The opening force required to open the accessible, hinged, non-fire door is more than 5 pounds.		
Location Description	Room 218A	
Observed	May 20, 2024 by Brian.rogers@bureauveritas.com	
Site Conditions		
The door rubs on the threshold, creating an initial 23 pounds of pressure to open.		
Resolution		
Adjust the closer or replace with a door that requires no more than 5 pounds of force for pushing or pulling the door open. The force at the latch, the force to set the door in motion, and the force to fully open the door shall be maximum 5 pounds. These forces do not apply to the force required to retract latch bolts or disengage other devices that hold the door or gate in a closed position.		
Quantity	Unit Cost	Total Cost
1 EA	458.00	\$ 458
Priority	1	



Abernethy Hall INTERIOR

Assembly Interior Access Route

Type Door

ADA Standard 404.2.4; Table 404.2.4.1

Barrier Detail

The pull side of the accessible door does not have the required maneuvering clearances.

Location Description Room 218B

Observed May 20, 2024 by Brian.rogers@bureauveritas.com

Site Conditions

For a front approach on the pull side of the door, the latch side has 6" to a wall.

Dimensions 6"

Resolution

Redesign to provide the required maneuvering clearance at the pull side of the door. The required depth of the maneuvering clearance is 60" minimum. The required side clearance is 18" minimum on the latch side of the door. Maneuvering clearance shall extend the full width of the doorway and the required latch side clearance. Floor or ground space within the required maneuvering clearance shall be maximum 1:48 (2.08%) slope. Changes in level are not permitted.

Quantity	Unit Cost	Total Cost
1 EA	1,562.50	\$ 1,563

Priority 1

Photos for Barrier ID: AX456076



Abernethy Hall INTERIOR

Assembly	Interior Access Route
Type	Door
ADA Standard	307.4, 404.2.3
Barrier Detail	The door has less than 32" clear width.
Location Description	Room 218B
Observed	May 20, 2024 by Brian.rogers@bureauveritas.com
Site Conditions	The width of the opening of the door is 28 inches.
Width	28"

Resolution

Remove and replace with a door that has a minimum clear opening of 32". Door openings shall provide a clear width of 32" minimum. Clear openings of doorways with swinging doors shall be measured between the face of the door and the stop, with the door open 90 degrees. Openings more than 24" deep shall provide a clear opening of 36" minimum. There shall be no projections into the required clear opening width lower than 34" above the finish floor or ground. Projections into the clear opening width between 34" and 80" above the finish floor or ground shall not exceed 4". [EXCEPTIONS: 1. In alterations, a projection of 5/8" maximum into the required clear width shall be permitted for the latch side stop. 2. Door closers and door stops shall be permitted to be 78" minimum above the finish floor or ground.]

Quantity	Unit Cost	Total Cost
1 EA	3,250.00	\$ 3,250
Priority	1	

Photos for Barrier ID: AX456077



Abernethy Hall INTERIOR

Assembly	Interior Access Route
Type	Door
ADA Standard	307.4, 404.2.3
Barrier Detail	The door has less than 32" clear width.
Location Description	Room 219A
Observed	May 20, 2024 by Brian.rogers@bureauveritas.com
Site Conditions	The door is 27 inches wide.
Width	27"

Resolution

Remove and replace with a door that has a minimum clear opening of 32". Door openings shall provide a clear width of 32" minimum. Clear openings of doorways with swinging doors shall be measured between the face of the door and the stop, with the door open 90 degrees. Openings more than 24" deep shall provide a clear opening of 36" minimum. There shall be no projections into the required clear opening width lower than 34" above the finish floor or ground. Projections into the clear opening width between 34" and 80" above the finish floor or ground shall not exceed 4". [EXCEPTIONS: 1. In alterations, a projection of 5/8" maximum into the required clear width shall be permitted for the latch side stop. 2. Door closers and door stops shall be permitted to be 78" minimum above the finish floor or ground.]

Quantity	Unit Cost	Total Cost
1 EA	3,250.00	\$ 3,250
Priority	1	

Photos for Barrier ID: AX456068



Abernethy Hall INTERIOR

Assembly Interior Access Route

Type Door

ADA Standard 404.2.4; Table 404.2.4.1

Barrier Detail

The pull side of the accessible door does not have the required maneuvering clearances.

Location Description Room 219A

Observed May 20, 2024 by Brian.rogers@bureauveritas.com

Site Conditions

For a front approach on the pull side of the door, the latch side has 5 1/2 inches to a bookcase.

Dimensions 5 1/2"

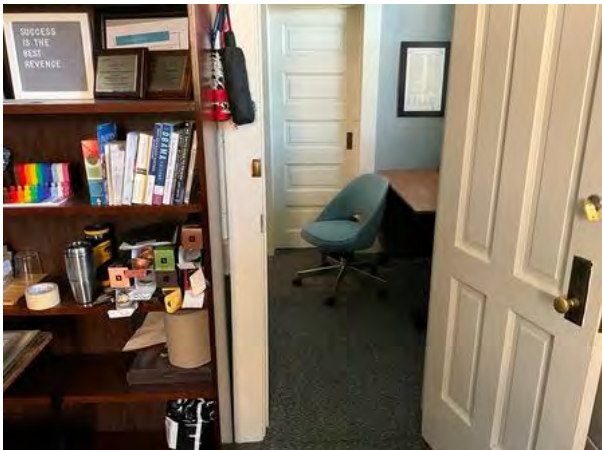
Resolution

Relocate furniture to provide the required maneuvering clearance at the pull side of the door. The required depth of the maneuvering clearance is 60" minimum. The required side clearance is 18" minimum on the latch side of the door. Maneuvering clearance shall extend the full width of the doorway and the required latch side clearance. Floor or ground space within the required maneuvering clearance shall be maximum 1:48 (2.08%) slope. Changes in level are not permitted.

Quantity	Unit Cost	Total Cost
1 EA	125.00	\$ 125

Priority 1

Photos for Barrier ID: AX456070



Abernethy Hall INTERIOR

Assembly	Interior Access Route
Type	Door
ADA Standard	307.4, 404.2.3
Barrier Detail	The door has less than 32" clear width.
Location Description	Room 219A inner doors
Observed	May 20, 2024 by Brian.rogers@bureauveritas.com
Site Conditions	The inner office doors are 25 inches wide and 27 inches wide.
Width	25" - 27"

Resolution

Remove and replace with a door that has a minimum clear opening of 32". Door openings shall provide a clear width of 32" minimum. Clear openings of doorways with swinging doors shall be measured between the face of the door and the stop, with the door open 90 degrees. Openings more than 24" deep shall provide a clear opening of 36" minimum. There shall be no projections into the required clear opening width lower than 34" above the finish floor or ground. Projections into the clear opening width between 34" and 80" above the finish floor or ground shall not exceed 4". [EXCEPTIONS: 1. In alterations, a projection of 5/8" maximum into the required clear width shall be permitted for the latch side stop. 2. Door closers and door stops shall be permitted to be 78" minimum above the finish floor or ground.]

Quantity	Unit Cost	Total Cost
2 EA	3,250.00	\$ 6,500
Priority	1	



Abernethy Hall INTERIOR

Assembly	Interior Access Route
Type	Door
ADA Standard	307.4, 404.2.3
Barrier Detail	The door has less than 32" clear width.
Location Description	Room 219B
Observed	May 20, 2024 by Brian.rogers@bureauveritas.com
Site Conditions	The door is 27 1/2 inches wide.
Width	27 1/2"

Resolution

Remove and replace with a door that has a minimum clear opening of 32". Door openings shall provide a clear width of 32" minimum. Clear openings of doorways with swinging doors shall be measured between the face of the door and the stop, with the door open 90 degrees. Openings more than 24" deep shall provide a clear opening of 36" minimum. There shall be no projections into the required clear opening width lower than 34" above the finish floor or ground. Projections into the clear opening width between 34" and 80" above the finish floor or ground shall not exceed 4". [EXCEPTIONS: 1. In alterations, a projection of 5/8" maximum into the required clear width shall be permitted for the latch side stop. 2. Door closers and door stops shall be permitted to be 78" minimum above the finish floor or ground.]

Quantity	Unit Cost	Total Cost
1 EA	3,250.00	\$ 3,250
Priority	1	

Photos for Barrier ID: AX456071



Abernethy Hall EXTERIOR

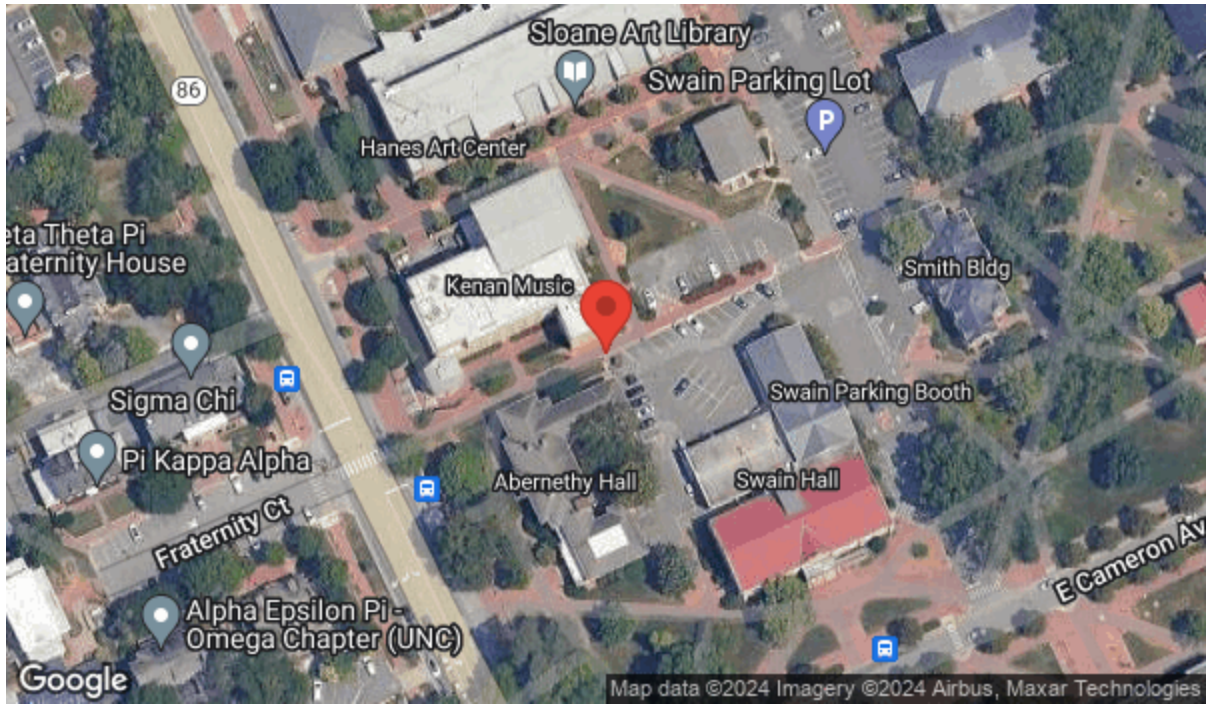
Assembly	Exterior Access Route
Type	Stairs
ADA Standard	505
Barrier Detail	Handrails are not compliant or are not provided.
Location Description	Side Exit
Observed	May 20, 2024 by Brian.rogers@bureauveritas.com
Site Conditions	Handrails are not provided on the stairs.

Resolution

Install handrails on both sides of all stairs that comply with guidelines. Handrails shall be provided on both sides of stairs. Handrails shall be continuous within the full length of each stair flight or ramp run. Inside handrails on switchback or dogleg stairs and ramps shall be continuous between flights or runs. Top of gripping surfaces of handrails shall be 34" minimum and 38" maximum vertically above walking surfaces, stair nosings, and ramp surfaces. Handrails shall be at a consistent height above walking surfaces, stair nosings, and ramp surfaces. Clearance between handrail gripping surfaces and adjacent surfaces shall be 1-1/2" minimum. Handrail gripping surfaces shall be continuous along their length and shall not be obstructed along their tops or sides. The bottoms of handrail gripping surfaces shall not be obstructed for more than 20% of their length. Where provided, horizontal projections shall occur 1-1/2" minimum below the bottom of the handrail gripping surface. [EXCEPTIONS: 1. Where handrails are provided along walking surfaces with slopes not steeper than 1:20, the bottoms of handrail gripping surfaces shall be permitted to be obstructed along their entire length where they are integral to crash rails or bumper guards. 2. The distance between horizontal projections and the bottom of the gripping surface shall be permitted to be reduced by 1/8" for each 1/2" of additional handrail perimeter dimension that exceeds 4".] Handrail gripping surfaces with a circular cross section shall have an outside diameter of 1-1/4" minimum and 2" maximum. Handrail gripping surfaces with a non-circular cross section shall have a perimeter dimension of 4" minimum and 6-1/4" maximum, and a cross-section dimension of 2-1/4" maximum. Handrail gripping surfaces and any surfaces adjacent to them shall be free of sharp or abrasive elements and shall have rounded edges. Handrails shall not rotate within their fittings. Handrail gripping surfaces shall extend beyond and in the same direction of stair flights. At the top of a stair flight, handrails shall extend horizontally above the landing for 12" minimum beginning directly above the first riser nosing. At the bottom of a stair flight, handrails shall extend at the slope of the stair flight for a horizontal distance at least equal to one tread depth beyond the last riser nosing. Extensions shall return to a wall, guard, or the landing surface, or shall be continuous to the handrail of an adjacent stair flight. [EXCEPTIONS: 1. Extensions shall not be required for continuous handrails at the inside turn of switchback or dogleg stairs and ramps AND 3. In alterations, full extensions of handrails shall not be required where such extensions would be hazardous due to plan configuration.] [ADVISORY: It is advisable, but not required, to provide a handrail at a height designed for children. When children are the principal users in a building or facility (e.g., elementary schools), a second set of handrails at an appropriate height can assist them and aid in preventing accidents. A maximum height of 28" measured to the top of the gripping surface from the ramp surface or stair nosing is recommended for handrails designed for children. Sufficient vertical clearance between upper and lower handrails, 9" minimum, should be provided to help prevent entrapment.]

Quantity	Unit Cost	Total Cost
8 LF	203.75	\$ 1,630
Priority	1	

Map for Barrier ID: AX456032



38 35.91174550985924,-79.05418856564141

Photos for Barrier ID: AX456032



Abernethy Hall EXTERIOR

Assembly Exterior Access Route

Type Stairs

ADA Standard 2009 ANSI A117.1-504.5

Barrier Detail

NORTH CAROLINA: The stair tread, at the leading 2" at the stair nosing, does not have a visual contrast of dark-on-light or light-on-dark distinguished from the remainder of the tread.

Location Description Side Exit

Observed May 20, 2024 by Brian.rogers@bureauveritas.com

Site Conditions The stair treads do not have visual contrast.

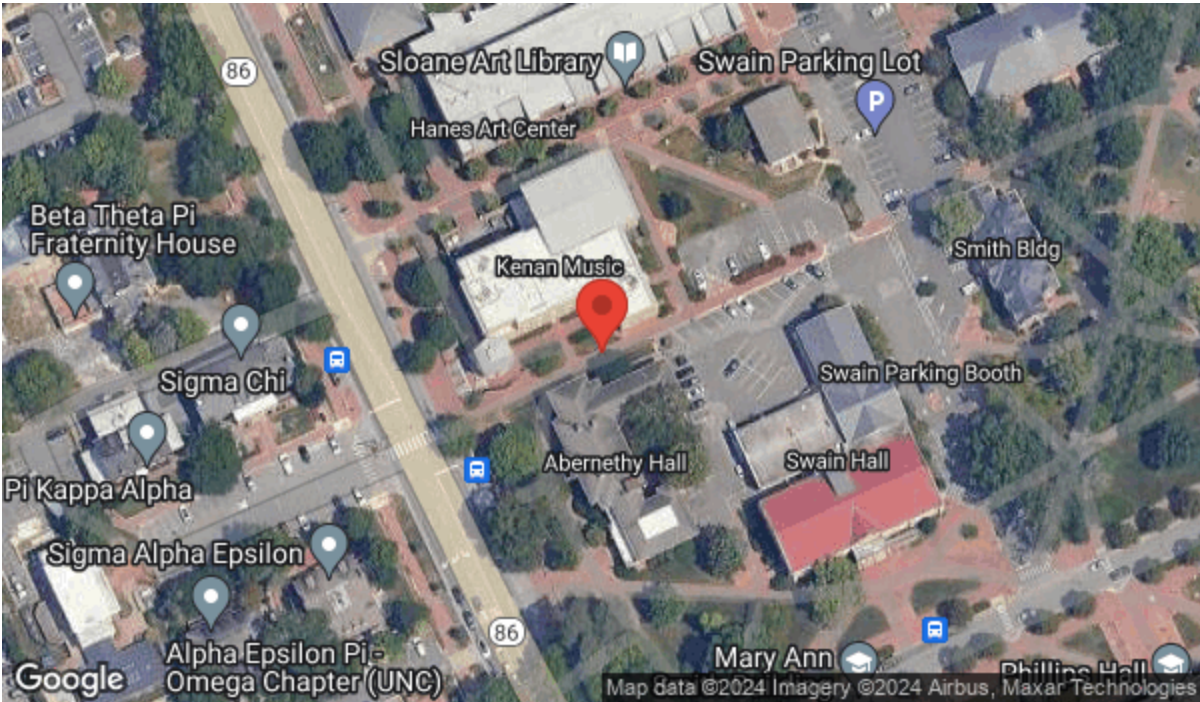
Resolution

Install a visual contrast on each stair tread at the nosing. At stair nosings, the leading 2" of tread shall have visual contrast of dark-on-light or light-on-dark from the remainder of the tread.

Quantity	Unit Cost	Total Cost
4 Riser	125.00	\$ 500

Priority 1

Map for Barrier ID: AX456033



Photos for Barrier ID: AX456033



Abernethy Hall INTERIOR

Assembly	Interior Access Route
Type	Door
ADA Standard	307.4, 404.2.3
Barrier Detail	The door has less than 32" clear width.
Location Description	Side exit interior doorway
Observed	May 20, 2024 by Brian.rogers@bureauveritas.com
Site Conditions	Side exit interior doorway is 26 1/2 inches wide.
Width	26 1/2"

Resolution

Remove and replace with a door that has a minimum clear opening of 32". Door openings shall provide a clear width of 32" minimum. Clear openings of doorways with swinging doors shall be measured between the face of the door and the stop, with the door open 90 degrees. Openings more than 24" deep shall provide a clear opening of 36" minimum. There shall be no projections into the required clear opening width lower than 34" above the finish floor or ground. Projections into the clear opening width between 34" and 80" above the finish floor or ground shall not exceed 4". [EXCEPTIONS: 1. In alterations, a projection of 5/8" maximum into the required clear width shall be permitted for the latch side stop. 2. Door closers and door stops shall be permitted to be 78" minimum above the finish floor or ground.]

Quantity	Unit Cost	Total Cost
1 EA	3,250.00	\$ 3,250

Priority	1
----------	---

Photos for Barrier ID: AX456031



Abernethy Hall INTERIOR

Assembly	Interior Access Route	
Type	Door	
ADA Standard	307.4, 404.2.3	
Barrier Detail	The door has less than 32" clear width.	
Location Description	Stair 100B	
Observed	May 20, 2024 by Brian.rogers@bureauveritas.com	
Site Conditions	The door to the steps is 29 1/2 inches wide.	
Width	29 1/2"	
Resolution	<p>Remove and replace with a door that has a minimum clear opening of 32". Door openings shall provide a clear width of 32" minimum. Clear openings of doorways with swinging doors shall be measured between the face of the door and the stop, with the door open 90 degrees. Openings more than 24" deep shall provide a clear opening of 36" minimum. There shall be no projections into the required clear opening width lower than 34" above the finish floor or ground. Projections into the clear opening width between 34" and 80" above the finish floor or ground shall not exceed 4". [EXCEPTIONS: 1. In alterations, a projection of 5/8" maximum into the required clear width shall be permitted for the latch side stop. 2. Door closers and door stops shall be permitted to be 78" minimum above the finish floor or ground.]</p>	
Quantity	Unit Cost	Total Cost
1 EA	3,250.00	\$ 3,250
Priority	1	



Abernethy Hall INTERIOR

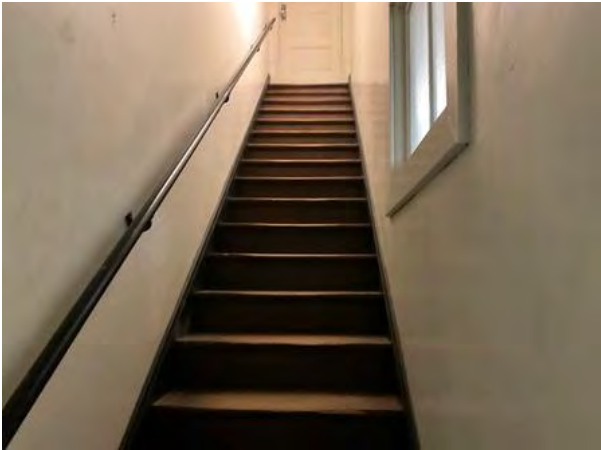
Assembly	Interior Access Route
Type	Stairs
ADA Standard	2009 ANSI A117.1-504.5
Barrier Detail	
NORTH CAROLINA: The stair tread, at the leading 2" at the stair nosing, does not have a visual contrast of dark-on-light or light-on-dark distinguished from the remainder of the tread.	
Location Description	Stair 100B
Observed	May 20, 2024 by Brian.rogers@bureauveritas.com
Site Conditions	Treads do not have contrast at the nose of the step.

Resolution

Install a visual contrast on each stair tread at the nosing. At stair nosings, the leading 2" of tread shall have visual contrast of dark-on-light or light-on-dark from the remainder of the tread.

Quantity	Unit Cost	Total Cost
21 Riser	125.00	\$ 2,625
Priority	1	

Photos for Barrier ID: AX456034



Abernethy Hall INTERIOR

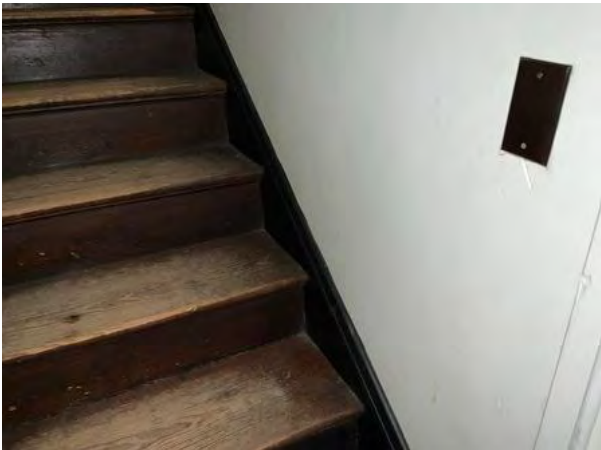
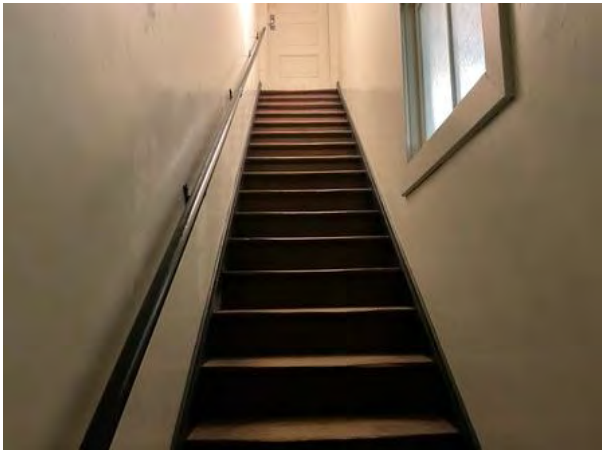
Assembly	Interior Access Route
Type	Stairs
ADA Standard	505
Barrier Detail	Handrails are not compliant.
Location Description	Stair 100B
Observed	May 20, 2024 by Brian.rogers@bureauveritas.com
Site Conditions	Handrail is missing on one side of the stair.

Resolution

Install handrails on both sides of all stairs that comply with guidelines. Handrails shall be provided on both sides of stairs. Handrails shall be continuous within the full length of each stair flight or ramp run. Inside handrails on switchback or dogleg stairs and ramps shall be continuous between flights or runs. Top of gripping surfaces of handrails shall be 34" minimum and 38" maximum vertically above walking surfaces, stair nosings, and ramp surfaces. If children are primary users, provide a second set of handrails with a minimum 9" between lower and higher rail, and the lower rail 28" max. from the walking surface. Handrails shall be at a consistent height above walking surfaces, stair nosings, and ramp surfaces. Clearance between handrail gripping surfaces and adjacent surfaces shall be 1-1/2" minimum. Handrail gripping surfaces shall be continuous along their length and shall not be obstructed along their tops or sides. The bottoms of handrail gripping surfaces shall not be obstructed by newel posts, other construction elements, or obstructions for more than 20% of their length. Where provided, horizontal projections shall occur 1-1/2" minimum below the bottom of the handrail gripping surface.

[EXCEPTIONS: 1. Where handrails are provided along walking surfaces with slopes not steeper than 1:20, the bottoms of handrail gripping surfaces shall be permitted to be obstructed along their entire length where they are integral to crash rails or bumper guards. 2. The distance between horizontal projections and the bottom of the gripping surface shall be permitted to be reduced by 1/8" for each 1/2" of additional handrail perimeter dimension that exceeds 4". Handrail gripping surfaces with a circular cross section shall have an outside diameter of 1-1/4" minimum and 2" maximum. Handrail gripping surfaces with a non-circular cross section shall have a perimeter dimension of 4" minimum and 6-1/4" maximum, and a cross-section dimension of 2-1/4" maximum. Handrail gripping surfaces and any surfaces adjacent to them shall be free of sharp or abrasive elements and shall have rounded edges. Handrails shall not rotate within their fittings. Handrail gripping surfaces shall extend beyond and in the same direction of stair flights. At the top of a stair flight, handrails shall extend horizontally above the landing for 12" minimum beginning directly above the first riser nosing. At the bottom of a stair flight, handrails shall extend at the slope of the stair flight for a horizontal distance at least equal to one tread depth beyond the last riser nosing. Extensions shall return to a wall, guard, or the landing surface, or shall be continuous to the handrail of an adjacent stair flight. [EXCEPTIONS: 1. Extensions shall not be required for continuous handrails at the inside turn of switchback or dogleg stairs and ramps AND 3. In alterations, full extensions of handrails shall not be required where such extensions would be hazardous due to plan configuration.] [ADVISORY: It is advisable, but not required, to provide a handrail at a height designed for children. When children are the principal users in a building or facility (e.g., elementary schools), a second set of handrails at an appropriate height can assist them and aid in preventing accidents. A maximum height of 28" measured to the top of the gripping surface from the ramp surface or stair nosing is recommended for handrails designed for children. Sufficient vertical clearance between upper and lower handrails, 9" minimum, should be provided to help prevent entrapment.]

Quantity	Unit Cost	Total Cost
25 LF	203.75	\$ 5,094
Priority	1	



Abernethy Hall INTERIOR

Assembly	Interior Access Route
Type	Door
ADA Standard	307.4, 404.2.3
Barrier Detail	The door has less than 32" clear width.
Location Description	Stair 200B
Observed	May 20, 2024 by Brian.rogers@bureauveritas.com
Site Conditions	The door to the steps is 30 inches wide.
Width	30"

Resolution

Remove and replace with a door that has a minimum clear opening of 32". Door openings shall provide a clear width of 32" minimum. Clear openings of doorways with swinging doors shall be measured between the face of the door and the stop, with the door open 90 degrees. Openings more than 24" deep shall provide a clear opening of 36" minimum. There shall be no projections into the required clear opening width lower than 34" above the finish floor or ground. Projections into the clear opening width between 34" and 80" above the finish floor or ground shall not exceed 4". [EXCEPTIONS: 1. In alterations, a projection of 5/8" maximum into the required clear width shall be permitted for the latch side stop. 2. Door closers and door stops shall be permitted to be 78" minimum above the finish floor or ground.]

Quantity	Unit Cost	Total Cost
1 EA	3,250.00	\$ 3,250
Priority	1	

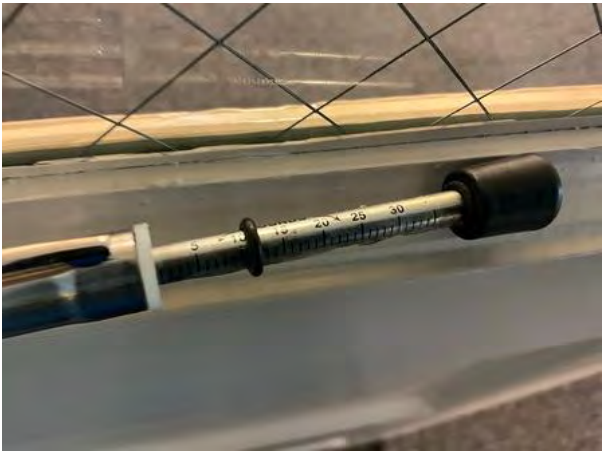
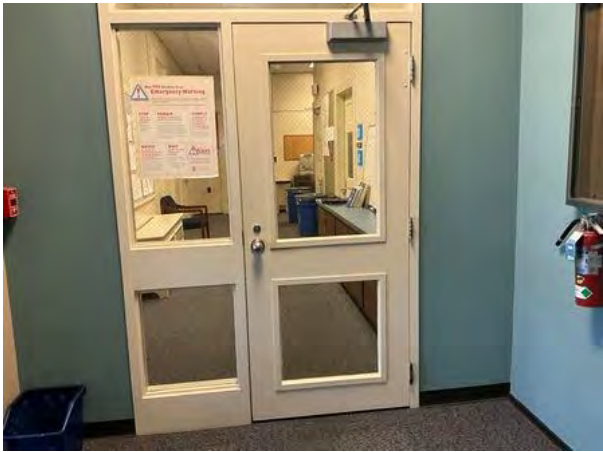
Photos for Barrier ID: AX456067



Abernethy Hall INTERIOR

Assembly	Interior Access Route	
Type	Door	
ADA Standard	404.2.9	
Barrier Detail		
The opening force required to open the accessible, hinged, non-fire door is more than 5 pounds.		
Location Description	Top Staircase Doors	
Observed	May 20, 2024 by Brian.rogers@bureauveritas.com	
Site Conditions	All three doors require 10 pounds of pressure to open	
Resolution		
Adjust the closer or replace with a door that requires no more than 5 pounds of force for pushing or pulling the door open. The force at the latch, the force to set the door in motion, and the force to fully open the door shall be maximum 5 pounds. These forces do not apply to the force required to retract latch bolts or disengage other devices that hold the door or gate in a closed position.		
Quantity	Unit Cost	Total Cost
3 EA	458.00	\$ 1,374
Priority	1	

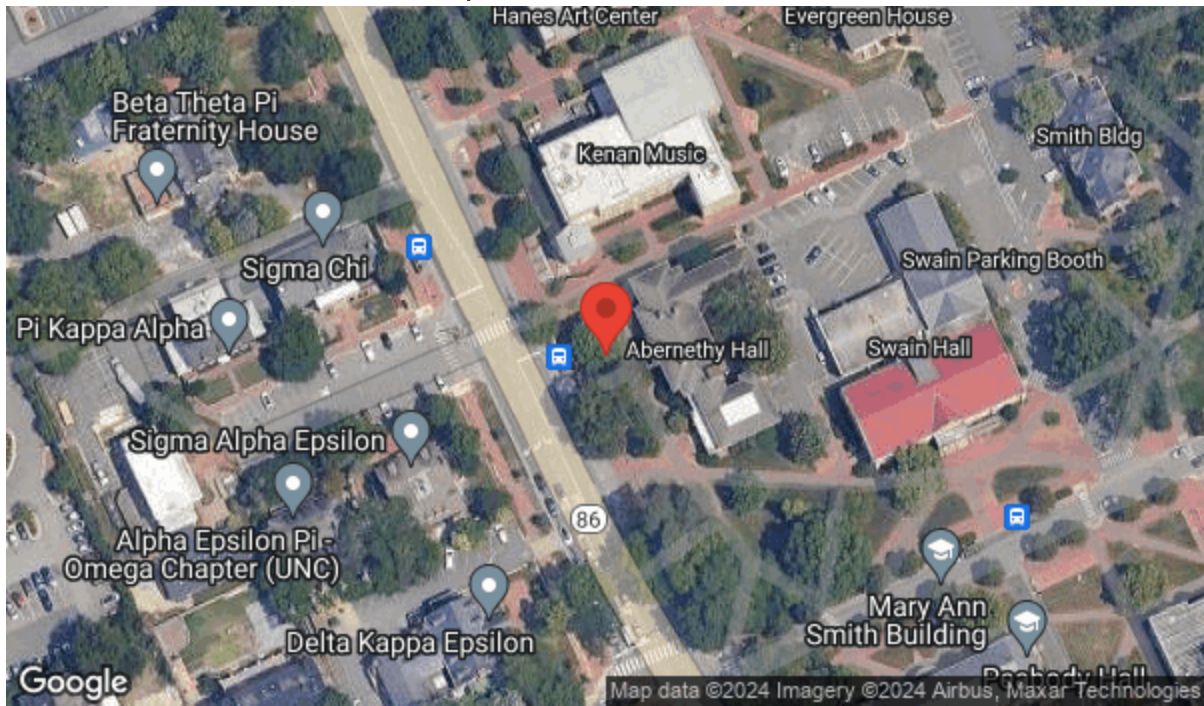
Photos for Barrier ID: AX456066



Abernethy Hall EXTERIOR

Assembly	Exterior Access Route	
Type	Reach Range	
ADA Standard	308, 309	
Barrier Detail		
Items requiring an obstructed forward reach motion are higher than 48" maximum height where the depth of the obstruction is 20" maximum, or greater than 44" maximum height where the depth of the obstruction is 20" to 25" maximum, or lower than minimum 15" height above finish floor.		
Location Description	Emergency Call #94	
Observed	May 20, 2024 by Brian.rogers@bureauveritas.com	
Site Conditions	The call button for the Emergency Call #94 is 51" above the ground.	
Height	51"	
Resolution		
Relocate part to a compliant reach range. Where a forward reach is unobstructed, the high forward reach shall be 48" maximum and the low forward reach shall be 15" minimum above the finish floor or ground. the element for a distance not less than the required reach depth over the obstruction. The high forward reach shall be 48" maximum where the reach depth is 20" maximum. Where the reach depth exceeds 20", the high forward reach shall be 44" maximum and the reach depth shall be 25" maximum. [EXCEPTION: An obstruction shall be permitted between the clear floor or ground space and the element where the depth of the obstruction is 10" maximum.] [ADVISORY for Children's Forward or Side Reach Ranges: High reach (maximum): 36" for ages 3 to 4; 40" for ages 5 to 8; and 44" for ages 9 to 12. Low reach (minimum): 20" for ages 3 to 4; 18" for ages 5 to 8; and 16" for ages 9 to 12.]		
Quantity	Unit Cost	Total Cost
1 EA	625.00	\$ 625
Priority	2	

Map for Barrier ID: AX456002



8 +35.911454, -79.054541

Photos for Barrier ID: AX456002



Abernethy Hall INTERIOR

Assembly	Interior Access Route
Type	Reach Range
ADA Standard	308, 309

Barrier Detail

Items requiring an unobstructed forward reach motion are higher than 48" maximum or lower than 15" minimum height above finish floor.

Location Description	Interior
Observed	May 20, 2024 by Brian.rogers@bureauveritas.com

Site Conditions

Light switches are at 51 inches above finished floor and within 1991 standards.

Height	51"
--------	-----

Resolution

Relocate part to a compliant reach range. Where a forward reach is unobstructed, the high forward reach shall be 48" maximum and the low forward reach shall be 15" minimum above the finish floor or ground. Where the high forward reach is over an obstruction, the clear floor space shall extend beneath the element for a distance not less than the required reach depth over the obstruction. The high forward reach shall be 48" maximum where the reach depth is 20" maximum. Where the reach depth exceeds 20", the high forward reach shall be 44" maximum and the reach depth shall be 25" maximum. [EXCEPTION: An obstruction shall be permitted between the clear floor or ground space and the element where the depth of the obstruction is 10" maximum.] [ADVISORY for Children's Forward or Side Reach Ranges: High reach (maximum): 36" for ages 3 to 4; 40" for ages 5 to 8; and 44" for ages 9 to 12. Low reach (minimum): 20" for ages 3 to 4; 18" for ages 5 to 8; and 16" for ages 9 to 12.]

Quantity	Unit Cost	Total Cost
10 EA	325.00	\$ 3,250
Priority	2	

Photos for Barrier ID: AX456078



Abernethy Hall EXTERIOR

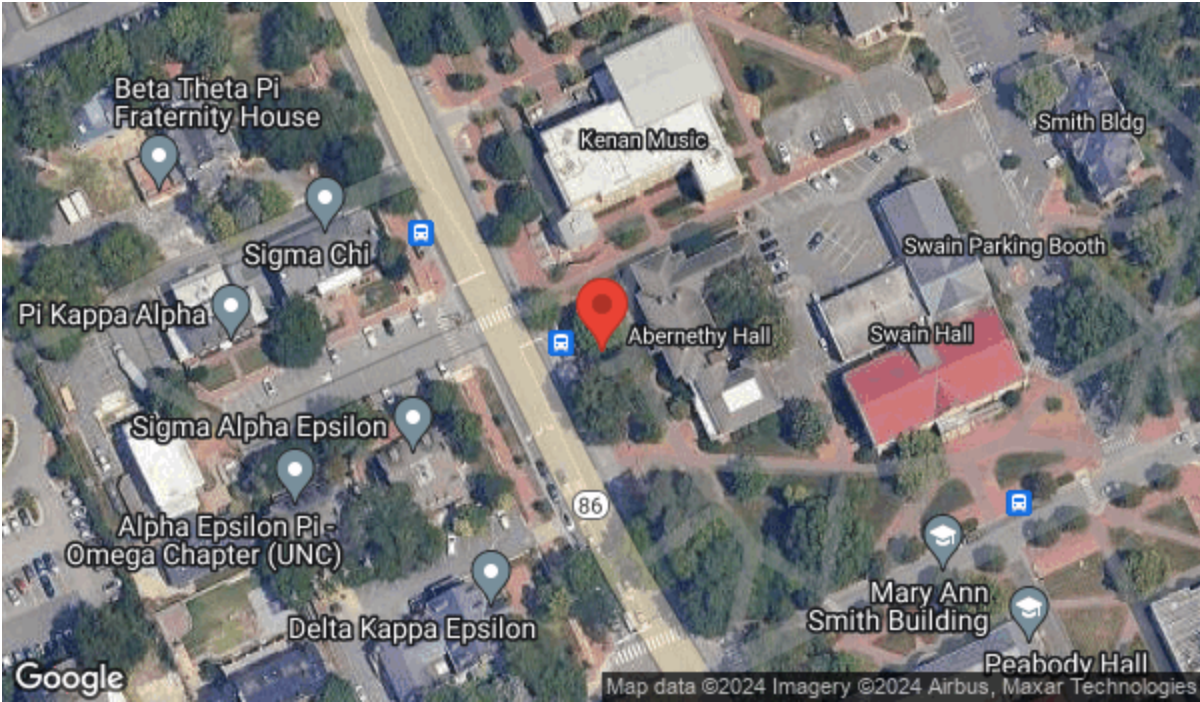
Assembly	Exterior Access Route
Type	Clear Space
ADA Standard	305; 309.2
Barrier Detail	Clear space is not provided at the operable part.
Location Description	Emergency Call #94
Observed	May 20, 2024 by Brian.rogers@bureauveritas.com
Site Conditions	Emergency Call Station #94 is 21 inches from the brick walkway.
Length	21"

Resolution

Provide clear space at the operable part. Floor or ground surfaces of a clear floor or ground space shall have slopes not steeper than 1:48, and shall be stable, firm, and slip resistant. Clear space shall be 30" minimum by 48" minimum, positioned for a forward or parallel approach. One full unobstructed side shall adjoin an accessible route or adjoin another clear floor or ground space. Clear floor or ground space shall include knee and toe clearance.

Quantity	Unit Cost	Total Cost
10 SF	42.64	\$ 426
Priority	3	

Map for Barrier ID: AX456001



7 +35.911432, -79.054557

Photos for Barrier ID: AX456001



Abernethy Hall INTERIOR

Assembly	Restroom
Type	Restroom/Bathroom - Lavatory
ADA Standard	213.3.4, 606.5
Barrier Detail	Pipes are not insulated.
Location Description	First floor Women's
Observed	May 20, 2024 by Brian.rogers@bureauveritas.com
Site Conditions	The lavatory pipes are not insulated.

Resolution

Insulate water supply and drain pipes under the accessible lavatory. Water supply and drain pipes under lavatories and sinks shall be insulated or otherwise configured to protect against contact. Pipes under lavatories and sinks shall be free from sharp or abrasive surfaces. A minimum of one lavatory in a multi-lavatory restroom shall be a compliant lavatory.

Quantity	Unit Cost	Total Cost
2 EA	81.25	\$ 163
Priority	3	

Photos for Barrier ID: AX456022



Abernethy Hall INTERIOR

Assembly	Restroom
Type	Controls And Dispensers
ADA Standard	606.1; 309.3
Barrier Detail	The height of controls are not compliant.
Location Description	First Floor Women's Restroom
Observed	May 20, 2024 by Brian.rogers@bureauveritas.com

Site Conditions

The paper towel dispensers are 66 1/2 inch from the finish floor to the operable part.

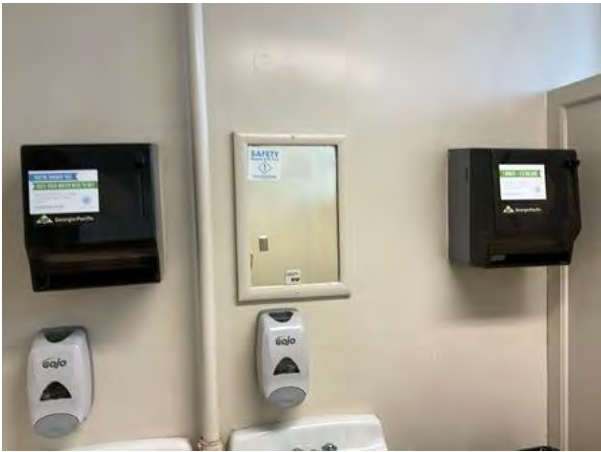
Height	66 1/2"
--------	---------

Resolution

Provide operable parts of all controls, dispenser, receptacle and other operable equipment within at least one of the reach ranges. Operable parts shall be placed within one or more of the reach ranges. Unobstructed Forward Reach: Where a forward reach is unobstructed, the high forward reach shall be 48" maximum and the low forward reach shall be 15" minimum above the finish floor or ground. Obstructed High Forward Reach: Where a high forward reach is over an obstruction, the clear floor space shall extend beneath the element for a distance not less than the required reach depth over the obstruction. The high forward reach shall be 48" maximum where the reach depth is 20" maximum. Where the reach depth exceeds 20", the high forward reach shall be 44" maximum and the reach depth shall be 25" maximum. Unobstructed Side Reach: Where a clear floor or ground space allows a parallel approach to an element and the side reach is unobstructed, the high side reach shall be 48" maximum and the low side reach shall be 15" minimum above the finish floor or ground. [EXCEPTION: An obstruction shall be permitted between the clear floor or ground space and the element where the depth of the obstruction is 10" maximum.] Obstructed High Side Reach: Where a clear floor or ground space allows a parallel approach to an element and the high side reach is over an obstruction, the height of the obstruction shall be 34" maximum and the depth of the obstruction shall be 24" maximum. The high side reach shall be 48" maximum for a reach depth of 10" maximum. Where the reach depth exceeds 10", the high side reach shall be 46" maximum for a reach depth of 24" maximum. [ADVISORY for Children's Forward or Side Reach Ranges: High reach (maximum): 36" for ages 3 to 4; 40" for ages 5 to 8; and 44" for ages 9 to 12. Low reach (minimum): 20" for ages 3 to 4; 18" for ages 5 to 8; and 16" for ages 9 to 12.]

Quantity	Unit Cost	Total Cost
2 EA	250.00	\$ 500
Priority	3	

Photos for Barrier ID: AX456025



Abernethy Hall INTERIOR

Assembly	Restroom
Type	Restroom/Bathroom - Door
ADA Standard	404.2.3
Barrier Detail	The door has less than 32" clear width.
Location Description	First Floor Women's Restroom
Observed	May 20, 2024 by Brian.rogers@bureauveritas.com
Site Conditions	Interior door of the women's room is 26 inches wide.

Resolution

Remove and replace with a door that has a minimum clear opening of 32"; measured with the door open at 90°, measured from the face of the door to the stop. Door openings shall provide a clear width of 32" minimum. Clear openings of doorways with swinging doors shall be measured between the face of the door and the stop, with the door open 90°. Openings more than 24" deep shall provide a clear opening of 36" minimum. There shall be no projections into the required clear opening width lower than 34" above the finish floor or ground. Projections into the clear opening width between 34" and 80" above the finish floor or ground shall not exceed 4".
[EXCEPTIONS: 1. In alterations, a projection of 5/8" maximum into the required clear width shall be permitted for the latch side stop. 2. Door closers and door stops shall be permitted to be 78" minimum above the finish floor or ground.]

Quantity	Unit Cost	Total Cost
1 EA	1,405.00	\$ 1,405
Priority	3	

Photos for Barrier ID: AX456017



Abernethy Hall INTERIOR

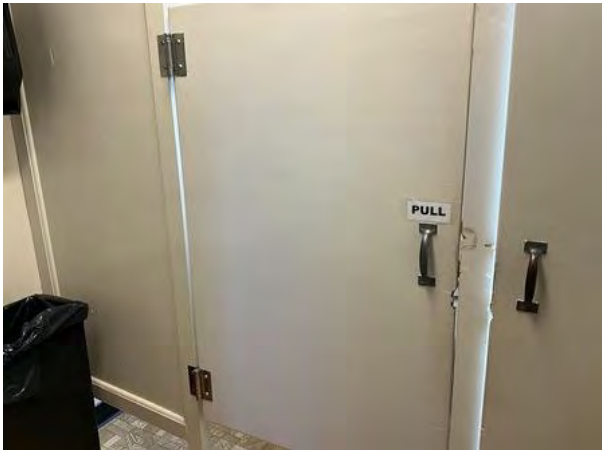
Assembly	Restroom
Type	Restroom/Bathroom - Door
ADA Standard	404.2.3
Barrier Detail	The door has less than 32" clear width.
Location Description	First Floor Women's Restroom
Observed	May 20, 2024 by Brian.rogers@bureauveritas.com
Site Conditions	The stall door is 28 1/2 inches wide.

Resolution

Remove and replace with a door that has a minimum clear opening of 32"; measured with the door open at 90°, measured from the face of the door to the stop. Door openings shall provide a clear width of 32" minimum. Clear openings of doorways with swinging doors shall be measured between the face of the door and the stop, with the door open 90°. Openings more than 24" deep shall provide a clear opening of 36" minimum. There shall be no projections into the required clear opening width lower than 34" above the finish floor or ground. Projections into the clear opening width between 34" and 80" above the finish floor or ground shall not exceed 4".
[EXCEPTIONS: 1. In alterations, a projection of 5/8" maximum into the required clear width shall be permitted for the latch side stop. 2. Door closers and door stops shall be permitted to be 78" minimum above the finish floor or ground.]

Quantity	Unit Cost	Total Cost
1 EA	1,405.00	\$ 1,405
Priority	3	

Photos for Barrier ID: AX456019



Abernethy Hall INTERIOR

Assembly	Restroom
Type	Restroom/Bathroom - Floor Space
ADA Standard	304, 603.2.1; 603.2.2
Barrier Detail	The required turning space within the restroom is not provided.
Location Description	First Floor Women's Restroom
Observed	May 20, 2024 by Brian.rogers@bureauveritas.com

Site Conditions

The floor mounted radiator creates a barrier that only allows 47 inches of floor space between the front wall and the radiator.

Resolution

A compliant, unobstructed turning space shall be provided within an accessible toilet room. The clear floor space at fixtures and controls, the accessible route, and the turning space may overlap. The turning space shall be a space of 60" diameter minimum. The space shall be permitted to include knee and toe clearance. The turning space shall be a T-shaped space within a 60" square minimum with arms and base 36" wide minimum. Each arm of the T shall be clear of obstructions 12" minimum in each direction and the base shall be clear of obstructions 24" minimum "OR" The space shall be permitted to include compliant knee and toe clearance only at the end of either the base or one arm. Doors shall be permitted to swing into turning spaces. Floor or ground surfaces of a turning space shall be level. Changes in level are not permitted. [EXCEPTION: Slopes not steeper than 1:48 shall be permitted.] [Advisory 304.2: Floor or Ground Surface Exception: Turning space "changes in level" refers to surfaces with slopes and to surfaces with abrupt rise exceeding 1/4". Such changes in level are prohibited in required clear floor and ground spaces, turning spaces, and in similar spaces where people using wheelchairs and other mobility devices must park their mobility aides, such as in wheelchair spaces, or maneuver to use elements such as at doors, fixtures, and telephones.]

Quantity	Unit Cost	Total Cost
1 EA	11,562.50	\$ 11,563
Priority	3	



Abernethy Hall INTERIOR

Assembly	Restroom
Type	Restroom/Bathroom - Lavatory
ADA Standard	606.4; 309
Barrier Detail	The lavatory faucet hardware is not compliant.
Location Description	First Floor Women's Restroom
Observed	May 20, 2024 by Brian.rogers@bureauveritas.com
Site Conditions	Faucet hardware requires tight grasp to operate.

Resolution

Provide push/lever hardware for the faucet. Replace faucet operating hardware with compliant handles. Operable parts, such as faucet hardware, shall be operable with one hand and shall not require tight grasping, pinching, or twisting of the wrist. The force required to activate operable parts shall be 5 pounds (22.2 N) maximum. Hand-operated metering faucets shall remain open for 10 seconds minimum. Provide a minimum of one accessible sink with push/lever hardware.

Quantity	Unit Cost	Total Cost
2 EA	693.75	\$ 1,388
Priority	3	

Photos for Barrier ID: AX456023



Abernethy Hall INTERIOR

Assembly	Restroom
Type	Restroom/Bathroom - Mirror
ADA Standard	213.3.5; 603.3

Barrier Detail

The mirror is mounted higher than 40" above finish floor to the bottom of the reflective surface, where it is installed above a lavatory or counter.

Location Description	First Floor Women's Restroom
----------------------	------------------------------

Observed	May 20, 2024 by Brian.rogers@bureauveritas.com
----------	--

Site Conditions

The mirror is 52 1/2 inches from the finished floor to the bottom of the reflective surface.

Resolution

Remove and lower the mirror to a compliant height. Where mirrors are provided, at least one shall comply. Mirrors located above lavatories or countertops shall be installed with the bottom edge of the reflecting surface 40" maximum above the finish floor or ground. Mirrors not located above lavatories or countertops shall be installed with the bottom edge of the reflecting surface 35" maximum above the finish floor or ground. [ADVISORY: A single full-length mirror can accommodate a greater number of people, including children. In order for mirrors to be usable by people who are ambulatory and people who use wheelchairs, the top edge of mirrors should be 74" minimum from the floor or ground.]

Quantity	Unit Cost	Total Cost
1 EA	250.00	\$ 250

Priority	3
----------	---

Photos for Barrier ID: AX456024



Abernethy Hall INTERIOR

Assembly	Restroom
Type	Restroom/Bathroom - Water Closet
ADA Standard	604.5.2
Barrier Detail	The grab bars at the water closet are not compliant.
Location Description	First Floor Women's Restroom
Observed	May 20, 2024 by Brian.rogers@bureauveritas.com
Site Conditions	No rear or side grab bars present.

Resolution

Remove and install compliant grab bars. Grab bars shall be installed in a horizontal position at height of 33" minimum to 36" maximum above the finish floor, measured to the top of the gripping surface. The rear wall grab bar shall be 36" long minimum and extend from the centerline of the water closet 12" minimum on one side and 24" minimum on the other side. [EXCEPTIONS: 1. The rear grab bar shall be permitted to be 24" long minimum, centered on the water closet, where wall space does not permit a length of 36" minimum due to the location of a recessed fixture adjacent to the water closet. 2. Where an administrative authority requires flush controls for flush valves to be located in a position that conflicts with the location of the rear grab bar, then the rear grab bar shall be permitted to be split or shifted to the open side of the toilet area.] The side wall grab bar shall be 42" long minimum, located 12" maximum from the rear wall and extending 54" minimum. A continuous grab bar is allowable in lieu of rear and side grab bars. [ADVISORY: It is advisable, but not required, to use the specifications for children where children are the primary users of the restroom. Guidance in applying the specifications for children according to the age group served reflects the differences in the size, stature, and reach ranges of children ages 3 to 12. The specifications chosen should correspond to the age of the primary user group. The specifications of one age group should be applied consistently in the installation of a water closet and related elements. Water Closet Centerline: Ages 3 and 4- 12"; Ages 5 through 8- 12" to 15"; Ages 9 through 12- 15" to 18". Toilet Seat Height: Ages 3 and 4- 11" to 12"; Ages 5 through 8- 12" to 15"; Ages 9 through 12- 15" to 17". Grab Bar Height: Ages 3 and 4- 18" to 20"; Ages 5 through 8- 20" to 25"; Ages 9 through 12- 25" to 27"; Dispenser Height: Ages 3 and 4- 14"; Ages 5 through 8- 14" to 17"; Ages 9 through 12- 17" to 19"].

Quantity	Unit Cost	Total Cost
1 EA	887.50	\$ 888
Priority	3	

Photos for Barrier ID: AX456018



Abernethy Hall INTERIOR

Assembly	Restroom	
Type	Restroom/Bathroom - Water Closet	
ADA Standard	604.2	
Barrier Detail		
The centerline of the toilet in the wheelchair stall is not 16" minimum to 18" maximum from the sidewall.		
Location Description	First Floor Women's Restroom	
Observed	May 20, 2024 by Brian.rogers@bureauveritas.com	
Site Conditions	The center line of the toilet is 14 1/2 inches from the side wall.	
Resolution		
Provide a water closet with centerline 16" minimum to 18" maximum from the side wall or partition. The water closet shall be positioned with a wall or partition to the rear and to one side. The centerline of the water closet shall be 16" minimum to 18" maximum from the side wall or partition in a wheelchair stall. Water closets shall be arranged for a left-hand or right-hand approach. Clearance around a water closet shall be 60" minimum measured perpendicular from the side wall and 56" minimum measured perpendicular from the rear wall. The required clearance around the water closet shall be permitted to overlap the water closet, associated grab bars, dispensers, personal product disposal units, coat hooks, shelves, accessible routes, clear floor space and clearances required at other fixtures, and the turning space. No other fixtures or obstructions shall be located within the required water closet clearance. [ADVISORY: It is advisable, but not required, to use the specifications for children where children are the primary users of the restroom. Guidance in applying the specifications for children according to the age group served reflects the differences in the size, stature, and reach ranges of children ages 3 to 12. The specifications chosen should correspond to the age of the primary user group. The specifications of one age group should be applied consistently in the installation of a water closet and related elements. Water Closet Centerline: Ages 3 and 4- 12"; Ages 5 through 8- 12" to 15"; Ages 9 through 12- 15" to 18". Toilet Seat Height: Ages 3 and 4- 11" to 12"; Ages 5 through 8- 12" to 15"; Ages 9 through 12- 15" to 17". Grab Bar Height: Ages 3 and 4- 18" to 20"; Ages 5 through 8- 20" to 25"; Ages 9 through 12- 25" to 27"; Dispenser Height: Ages 3 and 4- 14"; Ages 5 through 8- 14" to 17"; Ages 9 through 12- 17" to 19"].		
Quantity	Unit Cost	Total Cost
1 EA	787.50	\$ 788
Priority	3	



Abernethy Hall INTERIOR

Assembly	Restroom
Type	Restroom/Bathroom - Lavatory
ADA Standard	606.4; 309
Barrier Detail	The lavatory faucet hardware is not compliant.
Location Description	Restroom 108
Observed	May 20, 2024 by Brian.rogers@bureauveritas.com
Site Conditions	Faucet hardware requires tight grasp to operate.

Resolution

Provide push/lever hardware for the faucet. Replace faucet operating hardware with compliant handles. Operable parts, such as faucet hardware, shall be operable with one hand and shall not require tight grasping, pinching, or twisting of the wrist. The force required to activate operable parts shall be 5 pounds (22.2 N) maximum. Hand-operated metering faucets shall remain open for 10 seconds minimum. Provide a minimum of one accessible sink with push/lever hardware.

Quantity	Unit Cost	Total Cost
1 EA	693.75	\$ 694
Priority	3	

Photos for Barrier ID: AX456026



Abernethy Hall INTERIOR

Assembly	Restroom
Type	Controls And Dispensers
ADA Standard	606.1; 309.3
Barrier Detail	The height of controls are not compliant.
Location Description	Second Floor Men's Restroom
Observed	May 20, 2024 by Brian.rogers@bureauveritas.com

Site Conditions

The paper towel dispenser is 60 1/2 inch from the finish floor to the operable part.

Height	60 1/2"
--------	---------

Resolution

Provide operable parts of all controls, dispenser, receptacle and other operable equipment within at least one of the reach ranges. Operable parts shall be placed within one or more of the reach ranges. Unobstructed Forward Reach: Where a forward reach is unobstructed, the high forward reach shall be 48" maximum and the low forward reach shall be 15" minimum above the finish floor or ground. Obstructed High Forward Reach: Where a high forward reach is over an obstruction, the clear floor space shall extend beneath the element for a distance not less than the required reach depth over the obstruction. The high forward reach shall be 48" maximum where the reach depth is 20" maximum. Where the reach depth exceeds 20", the high forward reach shall be 44" maximum and the reach depth shall be 25" maximum. Unobstructed Side Reach: Where a clear floor or ground space allows a parallel approach to an element and the side reach is unobstructed, the high side reach shall be 48" maximum and the low side reach shall be 15" minimum above the finish floor or ground. [EXCEPTION: An obstruction shall be permitted between the clear floor or ground space and the element where the depth of the obstruction is 10" maximum.] Obstructed High Side Reach: Where a clear floor or ground space allows a parallel approach to an element and the high side reach is over an obstruction, the height of the obstruction shall be 34" maximum and the depth of the obstruction shall be 24" maximum. The high side reach shall be 48" maximum for a reach depth of 10" maximum. Where the reach depth exceeds 10", the high side reach shall be 46" maximum for a reach depth of 24" maximum. [ADVISORY for Children's Forward or Side Reach Ranges: High reach (maximum): 36" for ages 3 to 4; 40" for ages 5 to 8; and 44" for ages 9 to 12. Low reach (minimum): 20" for ages 3 to 4; 18" for ages 5 to 8; and 16" for ages 9 to 12.]

Quantity	Unit Cost	Total Cost
1 EA	250.00	\$ 250

Priority	3
----------	---



Abernethy Hall INTERIOR

Assembly	Restroom
Type	Restroom/Bathroom - Door
ADA Standard	404.2.3
Barrier Detail	The door has less than 32" clear width.
Location Description	Second Floor Men's Restroom
Observed	May 20, 2024 by Brian.rogers@bureauveritas.com
Site Conditions	Interior door of the men's restroom is 26 inches wide.

Resolution

Remove and replace with a door that has a minimum clear opening of 32"; measured with the door open at 90°, measured from the face of the door to the stop. Door openings shall provide a clear width of 32" minimum. Clear openings of doorways with swinging doors shall be measured between the face of the door and the stop, with the door open 90°. Openings more than 24" deep shall provide a clear opening of 36" minimum. There shall be no projections into the required clear opening width lower than 34" above the finish floor or ground. Projections into the clear opening width between 34" and 80" above the finish floor or ground shall not exceed 4".
[EXCEPTIONS: 1. In alterations, a projection of 5/8" maximum into the required clear width shall be permitted for the latch side stop. 2. Door closers and door stops shall be permitted to be 78" minimum above the finish floor or ground.]

Quantity	Unit Cost	Total Cost
1 EA	1,405.00	\$ 1,405
Priority	3	

Photos for Barrier ID: AX456047



Abernethy Hall INTERIOR

Assembly	Restroom
Type	Restroom/Bathroom - Door
ADA Standard	603.2.3
Barrier Detail	The door swings into the required clear space for a fixture.
Location Description	Second Floor Men's Restroom
Observed	May 20, 2024 by Brian.rogers@bureauveritas.com
Site Conditions	The stall door is 5 1/2 inches from the nose of the toilet when opened 90°.

Resolution

Replace with out swing door. Doors shall not swing into the clear floor space or clearance required for any fixture. Doors shall be permitted to swing into the required turning space. EXCEPTIONS: 1. Doors to a toilet room or bathing room for a single occupant accessed only through a private office and not for common use or public use shall be permitted to swing into the clear floor space or clearance provided the swing of the door can be reversed. 2. Where the toilet room or bathing room is for individual use and a clear floor space is provided within the room beyond the arc of the door swing, doors shall be permitted to swing into the clear floor space or clearance required for any fixture.

Quantity	Unit Cost	Total Cost
1 EA	1,956.25	\$ 1,956
Priority	3	

Photos for Barrier ID: AX456048



Abernethy Hall INTERIOR

Assembly	Restroom
Type	Restroom/Bathroom - Door
ADA Standard	404.2.3
Barrier Detail	The door has less than 32" clear width.
Location Description	Second Floor Men's Restroom
Observed	May 20, 2024 by Brian.rogers@bureauveritas.com
Site Conditions	The stall door is 22 1/2 inches wide.

Resolution

Remove and replace with a door that has a minimum clear opening of 32"; measured with the door open at 90°, measured from the face of the door to the stop. Door openings shall provide a clear width of 32" minimum. Clear openings of doorways with swinging doors shall be measured between the face of the door and the stop, with the door open 90°. Openings more than 24" deep shall provide a clear opening of 36" minimum. There shall be no projections into the required clear opening width lower than 34" above the finish floor or ground. Projections into the clear opening width between 34" and 80" above the finish floor or ground shall not exceed 4".
[EXCEPTIONS: 1. In alterations, a projection of 5/8" maximum into the required clear width shall be permitted for the latch side stop. 2. Door closers and door stops shall be permitted to be 78" minimum above the finish floor or ground.]

Quantity	Unit Cost	Total Cost
1 EA	1,405.00	\$ 1,405
Priority	3	

Photos for Barrier ID: AX456049



Abernethy Hall INTERIOR

Assembly	Restroom
Type	Restroom/Bathroom - Floor Space
ADA Standard	304, 603.2.1; 603.2.2
Barrier Detail	The required turning space within the restroom is not provided.
Location Description	Second Floor Men's Restroom
Observed	May 20, 2024 by Brian.rogers@bureauveritas.com

Site Conditions

The floor mounted radiator creates a barrier that only allows 31 inches of floor space between the side of the toilet and the radiator.

Resolution

A compliant, unobstructed turning space shall be provided within an accessible toilet room. The clear floor space at fixtures and controls, the accessible route, and the turning space may overlap. The turning space shall be a space of 60" diameter minimum. The space shall be permitted to include knee and toe clearance. The turning space shall be a T-shaped space within a 60" square minimum with arms and base 36" wide minimum. Each arm of the T shall be clear of obstructions 12" minimum in each direction and the base shall be clear of obstructions 24" minimum "OR" The space shall be permitted to include compliant knee and toe clearance only at the end of either the base or one arm. Doors shall be permitted to swing into turning spaces. Floor or ground surfaces of a turning space shall be level. Changes in level are not permitted. [EXCEPTION: Slopes not steeper than 1:48 shall be permitted.] [Advisory 304.2: Floor or Ground Surface Exception: Turning space "changes in level" refers to surfaces with slopes and to surfaces with abrupt rise exceeding 1/4". Such changes in level are prohibited in required clear floor and ground spaces, turning spaces, and in similar spaces where people using wheelchairs and other mobility devices must park their mobility aides, such as in wheelchair spaces, or maneuver to use elements such as at doors, fixtures, and telephones.]

Quantity	Unit Cost	Total Cost
1 EA	11,562.50	\$ 11,563
Priority	3	

Photos for Barrier ID: AX456053



Abernethy Hall INTERIOR

Assembly	Restroom
Type	Restroom/Bathroom - Lavatory
ADA Standard	213.3.4, 606.5
Barrier Detail	Pipes are not insulated.
Location Description	Second Floor Men's Restroom
Observed	May 20, 2024 by Brian.rogers@bureauveritas.com
Site Conditions	The lavatory pipes are not insulated.

Resolution

Insulate water supply and drain pipes under the accessible lavatory. Water supply and drain pipes under lavatories and sinks shall be insulated or otherwise configured to protect against contact. Pipes under lavatories and sinks shall be free from sharp or abrasive surfaces. A minimum of one lavatory in a multi-lavatory restroom shall be a compliant lavatory.

Quantity	Unit Cost	Total Cost
1 EA	81.25	\$ 81
Priority	3	

Photos for Barrier ID: AX456054



Abernethy Hall INTERIOR

Assembly	Restroom
Type	Restroom/Bathroom - Lavatory
ADA Standard	606; 306
Barrier Detail	The lavatory does not have the required knee clearance.
Location Description	Second Floor Men's Restroom
Observed	May 20, 2024 by Brian.rogers@bureauveritas.com
Site Conditions	There is 24 1/4 inches knee clearance under the sink

Resolution

Relocate the lavatory to provide compliant knee clearance. A compliant clear floor space, positioned for a forward approach, and compliant knee and toe clearance shall be provided. [EXCEPTIONS: 2. A lavatory in a toilet room or bathing facility for a single occupant accessed only through a private office and not for common use or public use shall not be required to provide knee and toe clearance. 3. In residential dwelling units, cabinetry shall be permitted under lavatories and kitchen sinks provided that all of the following conditions are met: (a) the cabinetry can be removed without removal or replacement of the fixture; (b) the finish floor extends under the cabinetry; and (c) the walls behind and surrounding the cabinetry are finished. 4. A knee clearance of 24" minimum above the finish floor or ground shall be permitted at lavatories and sinks used primarily by children 6 through 12 years where the rim or counter surface is 31" maximum above the finish floor or ground. 5. A parallel approach shall be permitted to lavatories and sinks used primarily by children 5 years and younger. 6. The dip of the overflow shall not be considered in determining knee and toe clearances. 7. No more than one bowl of a multi-bowl sink shall be required to provide knee and toe clearance. Space under an element between 9" and 27" above the finish floor or ground shall be considered knee clearance and shall comply. Knee clearance shall extend 25" maximum under an element at 9" above the finish floor or ground. Where knee clearance is required under an element as part of a clear floor space, the knee clearance shall be 11" deep minimum at 9" above the finish floor or ground, and 8" deep minimum at 27" above the finish floor or ground. Between 9" and 27" above the finish floor or ground, the knee clearance shall be permitted to reduce at a rate of 1" in depth for each 6" in height. Knee and toe clearance shall be 30" wide minimum.

Quantity	Unit Cost	Total Cost
1 EA	900.00	\$ 900
Priority	3	

Photos for Barrier ID: AX456055



Abernethy Hall INTERIOR

Assembly	Restroom
Type	Restroom/Bathroom - Lavatory
ADA Standard	606.4; 309
Barrier Detail	The lavatory faucet hardware is not compliant.
Location Description	Second Floor Men's Restroom
Observed	May 20, 2024 by Brian.rogers@bureauveritas.com
Site Conditions	Faucet hardware requires tight grasp to operate.

Resolution

Provide push/lever hardware for the faucet. Replace faucet operating hardware with compliant handles. Operable parts, such as faucet hardware, shall be operable with one hand and shall not require tight grasping, pinching, or twisting of the wrist. The force required to activate operable parts shall be 5 pounds (22.2 N) maximum. Hand-operated metering faucets shall remain open for 10 seconds minimum. Provide a minimum of one accessible sink with push/lever hardware.

Quantity	Unit Cost	Total Cost
1 EA	693.75	\$ 694
Priority	3	

Photos for Barrier ID: AX456056



Abernethy Hall INTERIOR

Assembly	Restroom
Type	Restroom/Bathroom - Mirror
ADA Standard	213.3.5; 603.3

Barrier Detail

The mirror is mounted higher than 40" above finish floor to the bottom of the reflective surface, where it is installed above a lavatory or counter.

Location Description	Second Floor Men's Restroom
----------------------	-----------------------------

Observed	May 20, 2024 by Brian.rogers@bureauveritas.com
----------	--

Site Conditions

The mirror is 55 inches from the finished floor to the bottom of the reflective surface.

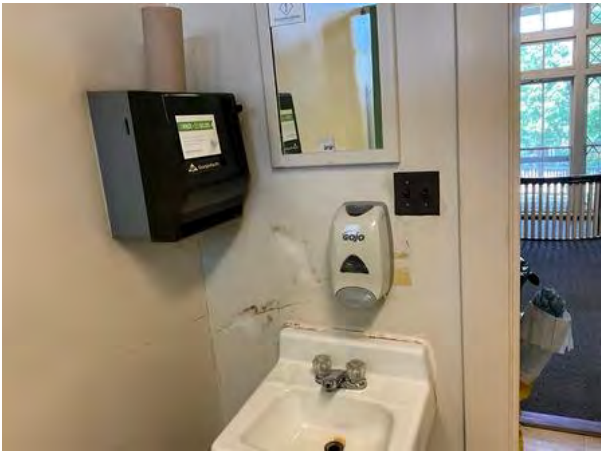
Resolution

Remove and lower the mirror to a compliant height. Where mirrors are provided, at least one shall comply. Mirrors located above lavatories or countertops shall be installed with the bottom edge of the reflecting surface 40" maximum above the finish floor or ground. Mirrors not located above lavatories or countertops shall be installed with the bottom edge of the reflecting surface 35" maximum above the finish floor or ground. [ADVISORY: A single full-length mirror can accommodate a greater number of people, including children. In order for mirrors to be usable by people who are ambulatory and people who use wheelchairs, the top edge of mirrors should be 74" minimum from the floor or ground.]

Quantity	Unit Cost	Total Cost
1 EA	250.00	\$ 250

Priority	3
----------	---

Photos for Barrier ID: AX456057



Abernethy Hall INTERIOR

Assembly	Restroom
Type	Restroom/Bathroom - Water Closet
ADA Standard	604.5.2
Barrier Detail	The grab bars at the water closet are not compliant.
Location Description	Second Floor Men's Restroom
Observed	May 20, 2024 by Brian.rogers@bureauveritas.com
Site Conditions	No rear or side grab bars present.

Resolution

Install compliant grab bars. Grab bars shall be installed in a horizontal position at height of 33" minimum to 36" maximum above the finish floor, measured to the top of the gripping surface. The rear wall grab bar shall be 36" long minimum and extend from the centerline of the water closet 12" minimum on one side and 24" minimum on the other side. [EXCEPTIONS: 1. The rear grab bar shall be permitted to be 24" long minimum, centered on the water closet, where wall space does not permit a length of 36" minimum due to the location of a recessed fixture adjacent to the water closet. 2. Where an administrative authority requires flush controls for flush valves to be located in a position that conflicts with the location of the rear grab bar, then the rear grab bar shall be permitted to be split or shifted to the open side of the toilet area.] The side wall grab bar shall be 42" long minimum, located 12" maximum from the rear wall and extending 54" minimum. A continuous grab bar is allowable in lieu of rear and side grab bars. [ADVISORY: It is advisable, but not required, to use the specifications for children where children are the primary users of the restroom. Guidance in applying the specifications for children according to the age group served reflects the differences in the size, stature, and reach ranges of children ages 3 to 12. The specifications chosen should correspond to the age of the primary user group. The specifications of one age group should be applied consistently in the installation of a water closet and related elements. Water Closet Centerline: Ages 3 and 4- 12"; Ages 5 through 8- 12" to 15"; Ages 9 through 12- 15" to 18". Toilet Seat Height: Ages 3 and 4- 11" to 12"; Ages 5 through 8- 12" to 15"; Ages 9 through 12- 15" to 17". Grab Bar Height: Ages 3 and 4- 18" to 20"; Ages 5 through 8- 20" to 25"; Ages 9 through 12- 25" to 27"; Dispenser Height: Ages 3 and 4- 14"; Ages 5 through 8- 14" to 17"; Ages 9 through 12- 17" to 19"].

Quantity	Unit Cost	Total Cost
1 EA	887.50	\$ 888
Priority	3	

Photos for Barrier ID: AX456050



Abernethy Hall INTERIOR

Assembly	Restroom	
Type	Restroom/Bathroom - Water Closet	
ADA Standard	604.2	
Barrier Detail		
The centerline of the toilet in the wheelchair stall is not 16" minimum to 18" maximum from the sidewall.		
Location Description	Second Floor Men's Restroom	
Observed	May 20, 2024 by Brian.rogers@bureauveritas.com	
Site Conditions	The center line of the toilet is 13 inches from the side wall.	
Resolution		
Provide a water closet with centerline 16" minimum to 18" maximum from the side wall or partition. The water closet shall be positioned with a wall or partition to the rear and to one side. The centerline of the water closet shall be 16" minimum to 18" maximum from the side wall or partition in a wheelchair stall. Water closets shall be arranged for a left-hand or right-hand approach. Clearance around a water closet shall be 60" minimum measured perpendicular from the side wall and 56" minimum measured perpendicular from the rear wall. The required clearance around the water closet shall be permitted to overlap the water closet, associated grab bars, dispensers, personal product disposal units, coat hooks, shelves, accessible routes, clear floor space and clearances required at other fixtures, and the turning space. No other fixtures or obstructions shall be located within the required water closet clearance. [ADVISORY: It is advisable, but not required, to use the specifications for children where children are the primary users of the restroom. Guidance in applying the specifications for children according to the age group served reflects the differences in the size, stature, and reach ranges of children ages 3 to 12. The specifications chosen should correspond to the age of the primary user group. The specifications of one age group should be applied consistently in the installation of a water closet and related elements. Water Closet Centerline: Ages 3 and 4- 12"; Ages 5 through 8- 12" to 15"; Ages 9 through 12- 15" to 18". Toilet Seat Height: Ages 3 and 4- 11" to 12"; Ages 5 through 8- 12" to 15"; Ages 9 through 12- 15" to 17". Grab Bar Height: Ages 3 and 4- 18" to 20"; Ages 5 through 8- 20" to 25"; Ages 9 through 12- 25" to 27"; Dispenser Height: Ages 3 and 4- 14"; Ages 5 through 8- 14" to 17"; Ages 9 through 12- 17" to 19"].		
Quantity	Unit Cost	Total Cost
1 EA	787.50	\$ 788
Priority	3	



Abernethy Hall INTERIOR

Assembly	Restroom	
Type	Restroom/Bathroom - Water Closet	
ADA Standard	604.4	
Barrier Detail		
The height of the water closet is not 17" minimum to 19" maximum above finished floor.		
Location Description	Second Floor Men's Restroom	
Observed	May 20, 2024 by Brian.rogers@bureauveritas.com	
Site Conditions	The height of the water closet is 15 1/2 inches above finish floor.	
Resolution		
Remove and replace with a toilet that has a compliant seat height. The seat height of a water closet shall be 17" minimum and 19" maximum above the finish floor, measured to the top of the seat. Seats shall not be sprung to return to a lifted position. [EXCEPTIONS: 1. A water closet in a toilet room for a single occupant accessed only through a private office and not for common use or public use shall not be required to comply. 2. In residential dwelling units, the height of water closets shall be permitted to be 15" minimum and 19" maximum above the finish floor measured to the top of the seat.] [ADVISORY: It is advisable, but not required, to use the specifications for children where children are the primary users of the restroom. Guidance in applying the specifications for children according to the age group served reflects the differences in the size, stature, and reach ranges of children ages 3 to 12. The specifications chosen should correspond to the age of the primary user group. The specifications of one age group should be applied consistently in the installation of a water closet and related elements. Water Closet Centerline: Ages 3 and 4- 12"; Ages 5 through 8- 12" to 15"; Ages 9 through 12- 15" to 18". Toilet Seat Height: Ages 3 and 4- 11" to 12"; Ages 5 through 8- 12" to 15"; Ages 9 through 12- 15" to 17". Grab Bar Height: Ages 3 and 4- 18" to 20"; Ages 5 through 8- 20" to 25"; Ages 9 through 12- 25" to 27"; Dispenser Height: Ages 3 and 4- 14"; Ages 5 through 8- 14" to 17"; Ages 9 through 12- 17" to 19"].		
Quantity	Unit Cost	Total Cost
1 EA	787.50	\$ 788
Priority	3	

Photos for Barrier ID: AX456052



Abernethy Hall INTERIOR

Assembly	Interior Access Route
Type	Drinking Fountain/Water Cooler
ADA Standard	211.1; 211.2; 602; 309
Barrier Detail	
The minimum number of drinking fountains is not provided. If the minimum number is provided, two levels or a hi-lo are not provided. If more than 2 are provided, less than 50% are high or less than 50% are low.	
Location Description	Drinking Fountain DF-2 at Second Floor Men's Restroom
Observed	May 20, 2024 by Brian.rogers@bureauveritas.com
Site Conditions	No lower drinking fountain is supplied.

Resolution

Install accessible drinking fountain(s). No fewer than two drinking fountains shall be provided; at two levels or one hi-lo unit. If more than two fountains are provided, 50% should be high (standing height) and 50% low (wheelchair) units. Low (wheelchair) units shall have a clear floor or ground space positioned for a forward approach and centered on the unit. Knee and toe clearance shall be provided. Knee clearance shall be minimum 30" wide, and extend to 27" height minimum above finished floor. Knee clearance shall be 11" deep minimum at 9" height, and 8" deep minimum at 27" height. Toe clearance requirement is 25" deep at 9" above grade. [EXCEPTION: A parallel approach shall be permitted at units for children's use (12 and under) where the spout is 30" maximum above the finish floor or ground and is 3- 1/2" maximum from the front edge of the unit, including bumpers.] Spout outlets of drinking fountains for wheelchairs shall be 36" maximum above the finish floor or ground. The spout shall be located 15" minimum from the vertical support and 5" maximum from the front edge of the unit, including bumpers. The spout shall provide a flow of water 4" high minimum and shall be located 5" maximum from the front of the unit. The angle of the water stream shall be measured horizontally relative to the front face of the unit. Where spouts are located less than 3" from the front of the unit, the angle of the water stream shall be 30 degrees maximum. Where spouts are located between 3" and 5" maximum from the front of the unit, the angle of the water stream shall be 15 degrees maximum. Spout outlets of drinking fountains for standing persons shall be 38" minimum and 43" maximum above the finish floor or ground. Operable parts shall be placed within one or more of the allowable reach ranges. Operable parts shall be operable with one hand and shall not require tight grasping, pinching, or twisting of the wrist. The force required to activate operable parts shall be 5 pounds (22.2 N) maximum.

Quantity	Unit Cost	Total Cost
1 EA	4,698.00	\$ 4,698
Priority	4	

Photos for Barrier ID: AX456059



Abernethy Hall INTERIOR

Assembly	Amenity Not Evaluated
Type	Amenity Not Evaluated
ADA Standard	None
Barrier Detail	The amenity cannot be accessed and, therefore, cannot be evaluated.
Location Description	Room 203A
Observed	May 20, 2024 by Brian.rogers@bureauveritas.com
Site Conditions	Access to the Restricted Data Room was not provided.

Resolution

The amenity could not be accessed, and therefore the amenity was not evaluated for compliance with accessibility codes and regulations.

Quantity	Unit Cost	Total Cost
1 EA	0.00	\$ 0
Priority	4	

Photos for Barrier ID: AX456061

